

# BEAUTY

## & SALONWEAR



BEAUTY TUNICS . TABARDS . APRONS . POLO SHIRTS . HEALTHCARE



# CONTENTS

## YOUR TIME TO SHINE

When clients attend their beauty and well-being appointments, they expect to be greeted by well-presented staff.

Discover a collection of stunning beauty tunics to help elevate your look, along with essential waterproof styles and suitable choices for healthcare professionals.

<b>Beauty Tunics &amp; Trousers</b>	<b>4 - 9</b>
<b>Aprons &amp; Gowns</b>	<b>10 - 15</b>
<b>Tabards</b>	<b>16 - 19</b>
<b>Polo Shirts</b>	<b>20 - 23</b>
<b>Casual Tees</b>	<b>24 - 25</b>
<b>Healthcare</b>	<b>26 - 27</b>

Front cover:

Models wear PR683 'Blossom' Beauty Tunic, page 5

Featured right:

Models wear PR683 'Blossom' Beauty Tunic, page 5

Back cover:

Models wear PR682 'Orchid' Beauty Tunic, page 6





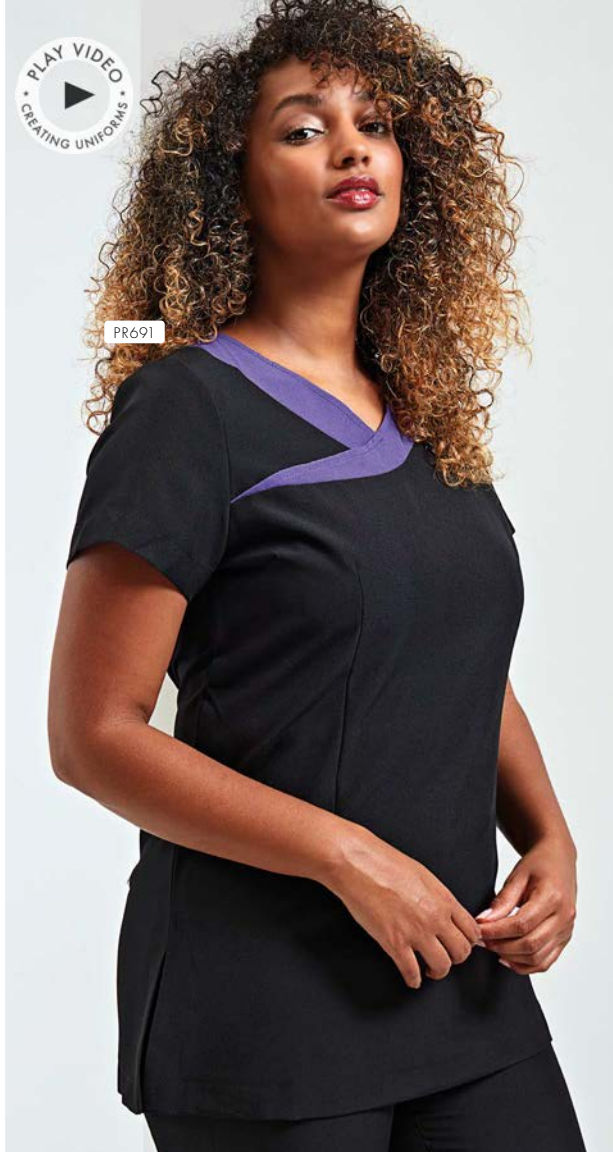




PR686



PR691



# Camellia

## PR686 Feature Zip Tunic

- Flattering feminine fit with bust and back darts, Cross over neckline, Pull-on style with front feature zip
- 100% Polyester, 185gsm
- Sizes: **2XS/6 – 5XL/24**
- 1 colour

BLACK & BLACK



# Ivy

## PR691 Contrast Neck Tunic

- Flattering feminine fit with bust and back darts, Crossover neckline with contrast coloured trim, Pull-on style with back zip fastening
- 100% Polyester, 185gsm
- Sizes: **2XS/6 – 5XL/24**
- 4 colours

STRAWBERRY RED & BLACK

HOT PINK & BLACK

PURPLE & BLACK

TURQUOISE & BLACK



EASY  
CARE







# Blossom

PR683

## PR683 Asymmetric Button Tunic ■

Flattering feminine fit with bust and back darts, Mandarin collar, Concealed zip through fastening and press stud ■ 100% Polyester, 185gsm ■ Sizes: **2XS/6** – **5XL/24** ■ 7 colours



**EASY**  
CARE

# Orchid



# 12

Colours

**PR682 Beauty & Spa Tunic** ■ Flattering  
feminine fit with bust and back darts,  
Mandarin collar, Eight 'bar' button  
fastening ■ 100% Polyester, 185gsm ■  
Sizes: **2XS/6** – **5XL/24** ■ 12 colours



PR682





PR681



## Rose

### PR690 Wrap Satin Trim Tunic

- Flattering feminine fit with bust and back darts, Satin trim creating the illusion of a wrap tunic, Pull-on style with back zip fastening
- 100% Polyester, 185gsm
- Sizes: **2XS/6 – 5XL/24**
- 1 colour



BLACK

## Mika

### PR681 Feature Button Tunic

- Flattering feminine fit with bust and back darts, Four sparkly feature buttons embellished on the trim, Pull-on style with back zip fastening
- 100% Polyester, 185gsm
- Sizes: **2XS/6 – 5XL/24**
- 1 colour



BLACK





STRAIGHT  
[FIT]

PR536



PR688

## Iris

### PR536 Women's Straight Leg Trouser

▪ Trouser with a deep waistband, YKK fastening zip, Cross over waistband with two button fastening ▪ 100% Polyester, 185gsm ▪ Sizes: **XS**/8 – **5XL**/24, Regular leg 31"/79 cm, \*Long leg 34"/86 cm ▪ 3 colours



## Viola

### PR688 Linen-Look V-Cut Beauty Tunic

▪ Open pockets to the sides, Round neck with v-cut, Concealed zip back ▪ 100% Polyester, 160gsm ▪ Sizes: **XS**/8 – **5XL**/24 ▪ 2 colours



EASY  
CARE





# Verbena

## **PR685 Linen-Look Button-Up**

**Beauty Tunic** ■ Banded style collar, Buttoned placket, Three quarter sleeves ■ 100% Polyester, 160gsm ■ Sizes: **XS/8 – 5XL/24** ■ 2 colours



LINEN-LOOK FABRIC

PR685



HEATHER GREY



HEATHER BLACK

		
CORNFLOWER	ROYAL	MARINE BLUE
		
NAVY	INDIGO DENIM	BLUE DENIM
		
CYAN	LIGHT BLUE	PEACOCK
		
MID BLUE	SAPPHIRE	LILAC
		
LAVENDER	PURPLE	RICH VIOLET
		
AUBERGINE	FUCHSIA	MAGENTA
		
PINK	ROSE	HOT PINK
		
RASPBERRY CRUSH	BURGUNDY	RED
		
SALSA	STRAWBERRY RED	ORANGE
		
TERRACOTTA	CHESTNUT	BROWN
		
MOCHA	MUSHROOM	LATTE
		
KHAKI	NATURAL	CAMEL
		
MUSTARD	SUNFLOWER	YELLOW
		
LEMON	LIME	OASIS GREEN
		
OLIVE	MOSS GREEN	AQUA
		
DUCK EGG BLUE	TURQUOISE	TEAL
		
EMERALD	KELLY	PISTACHIO
		
APPLE	BOTTLE	SAGE
		
WHITE*	BLACK DENIM	GREY DENIM
		
SILVER	STEEL	CHARCOAL
		
DARK GREY	BLACK*	

# 'COLOURS COLLECTION' BIB APRON

## PR150 'Colours Collection' Bib Apron ■

Adjustable buckle on neckband, Self-fabric ties,  
Two sizes available ■ 65% Polyester, 35% Cotton,  
195gsm. Denim: 70% Cotton, 30% Polyester, 265gsm  
■ Size: 86cm x 72cm

\*Extra large size: 102cm x 91cm  
(Black and White only)



Styled with PR683 'Blossom' Beauty Tunic, page 5



# 62

Colours



PR150



# 10

Colours



## 2 IN 1 APRON

**PR159** 'Colours Collection' 2-in-1 Apron ■ One apron worn two ways, Bib and waist apron styles, Pocket features on both styles ■ 65% Polyester, 35% Cotton, 195gsm ■ 10 colours



Can be worn as a bib apron, doubles over and neck ties are secured away to form a waist apron.





# IN THE SALON

PR683



PR536



PR682



PR536



PR698



PR115



# & AT THE BARBER'S!

PR615



PR123

PR630



PR126

PR219



PR136

PR560



PR560



PR560



# Salon Essentials



WATERPROOF



BLEACH  
RESISTANT



**PR115 Waterproof Bib Apron** ■ Adjustable buckle on neckband, Waterproof and bleach resistant, 90cm self fabric ties ■ 100% Polyester with Polyurethane coating, 110gsm ■ 8 colours





**PR116 Waterproof Salon Gown** ■ Suitable for salons and barbers, 145cm long by 123cm wide, Waterproof and bleach resistant, Adjustable tear release fastening at the back ■ 100% Polyester with Polyurethane coating, 110gsm ■ 2 colours



PR116

## Waterproof, bleach resistant salon gowns

PR117



**PR117 Long Sleeve Waterproof Salon Gown** ■ Waterproof and bleach resistant for use in salons and barbers, Elasticated cuffs, Adjustable tear release fastening ■ 100% Polyester with Polyurethane coating, 110gsm ■ 1 colour



# WATERPROOF WRAP AROUND TUNIC

**PR174 Waterproof Wrap Around Tunic** ■ Waterproof and bleach resistant, V-neck styling, Double centre pocket, Flattering feminine fit measuring 86cm in length ■ 100% Polyester with Polyurethane coating, 110gsm ■ Sizes: **S-M**/10-12, **L-XL**/14-16 ■ 4 colours



PR174





# 'TULIP'

## WRAP AROUND TUNIC

**PR177** 'Tulip' Wrap-Around Tunic ■ Over-the-head style, V-neck styling, Centre patch pocket ■ 100% polyester, 185gsm ■ Sizes: **S-M**/10-12, **L-XL**/14-16 ■ 4 colours

### FASTENING TIP

Bring the ties from back to front and tie round your waist on the underside, then take front ties and fasten at the back.



PR177



# TABARDS

**PR172 Long Length Pocket Tabard** ■ Pull-on coverall with a length of 78cm, Side tabs with adjustable press stud fastening, Centre pocket ■ 65% Polyester, 35% Cotton, 195gsm  
■ Sizes: **S**/10 – **XL**/16 ■ 3 colours





**PR171 Pocket Tabard** ■ Pull-on coverall with a length of 68cm, Side tabs with adjustable press stud fastening, Centre pocket ■ 65% Polyester, 35% Cotton, 195gsm

■ Sizes: **5/10 – 3XL/20** ■ 18 colours

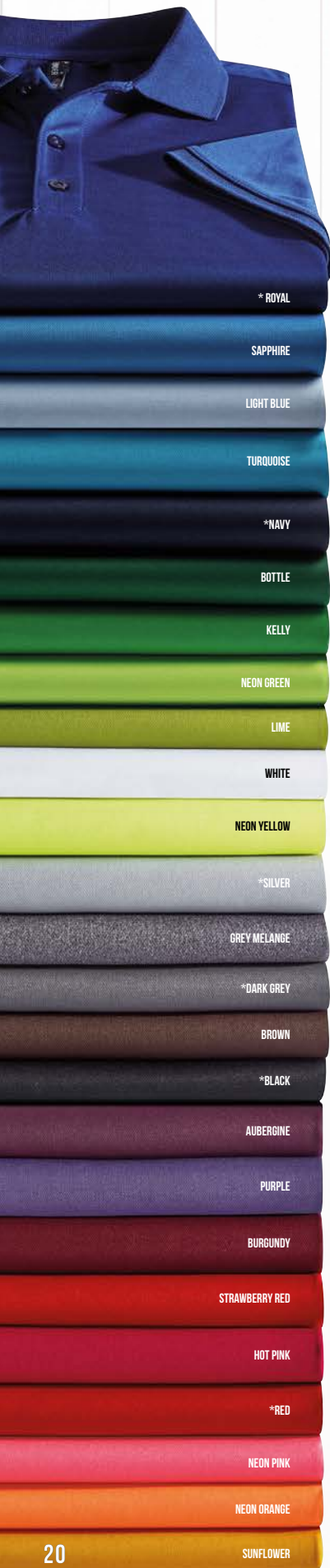


PR171

**18**

Colours





COOL<sup>®</sup>  
CHECKER

# COOLCHECKER<sup>®</sup> POLO SHIRTS

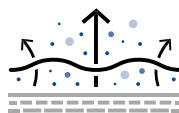
**Coolchecker<sup>®</sup> Pique Polo Shirt** ■ Side panels for fitted shape, Moisture management wicking fabric, Three button placket, Ribbed knit collar and cuffs ■ 100% Polyester pique knit, 155gsm, 25 colours

**PR615 Men's sizes: S/35" – \* 5XL/51"**

**PR616 Women's sizes: XS/8 – 2XL/18**

\*only available in selected colours

COOL  
CHECKER<sup>®</sup>



- Allows air flow through fabric
- Drawing moisture away from the body
- Fast dry and crease resistant

MODERN  
FIT





# 25

Colours



PR615

PR616



# 16

Colours



PR632

PR630



# PERFORMANCE POLO SHIRTS

**Coolchecker® Plus Pique Polo - Coolplus®** ■ Double pique knit for heavier construction, Coolplus® wicking yarn for breathability, Ribbed knit collar and cuffs, Three button placket, Snag and crease resistant, Silvadur™ technology for antimicrobial properties

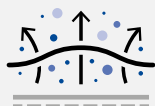
- 100% Coolplus® Polyester Pique, 185gsm, 16 colours.

**PR630** Men's sizes: S/35" – \*6XL/59" **PR632** Women's sizes: XS/8 – \*\*4XL/22

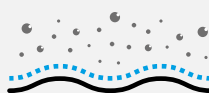
\*and \*\*only available in selected colours



**Air**  
flows through the fabric



**Moisture**  
drawn away from skin



**Fabric**  
that uses surface dimensional  
channel technology.



**antimicrobial**

which releases silver ions that  
destroy the bacteria that  
causes odour, material  
degradation and discolouration.

# 'COMIS' COTTON-RICH TEE

These styles represent our commitment to buying cotton through the Better Cotton™ initiative.

'Comis' Cotton-Rich Tee ■ Narrow banded collar, placket with single mental button, soft feel  
■ 60% Cotton, 40% Recycled Polyester, 160gsm. **Grey Marl:** 90% Cotton, 10% Viscose, 160gsm, 5 colours

**PR219** Men's sizes: S/34" – 3XL/54"

**PR319** Women's sizes: XS/8 – 2XL/18



† Grey Marl does not contain recycled polyester







PR219



PR319

# Healthcare Uniforms



**PR605 'Daisy' Healthcare Tunic** ■ V-neck styling, Concealed zip fastening with press stud, Two curved front pockets, Contrast trim on neckline, sleeves and pockets ■ 65% Polyester, 35% Cotton, 195gsm ■ Sizes: **XS/8** – **5XL/24** ■ 2 colours



**PR514 'Poppy' Healthcare Trousers** ■ Cross over waistband with two button fastening, Zip fly, Belt loops, Two slanted front pockets ■ 65% Polyester, 35% Cotton, 195gsm ■ Sizes: **XS/8** – **5XL/24** ■ 1 colour



PR514





**PR604 'Vitality' Healthcare Tunic** ■ Soft collar styling, Concealed zip fastening and press stud, Two slanted front pockets, Contrast trim on neckline, sleeves and pockets ■ 65% Polyester, 35% Cotton, 195gsm ■ Sizes: **XS/8** – **5XL/24** ■ 3 colours



PR604





