

PREMIER[®]

UNIFORMS THAT WORK FOR YOU

THE
ARTISAN
COLLECTION

VOLUME SEVEN



STYLING INSPIRATION AND BRANDING IDEAS FOR FRONT-OF-HOUSE TEAMS

APRONS

SHIRTS & TEES

CHEFSWEAR

CONTENTS



4

APRONS

The must-have accessory for front-of-house and kitchen teams.
Page 7 - 23



24

TEES

A casual alternative to a shirt.
Page 24 - 25



26

SHIRTS

The foundation piece to any uniform.
Page 26 - 33



34

EXTRA LAYERS

Serve comfortably in all seasons.
Page 34 - 35



36

CHINOS

Comfort stretch chino jeans and shorts.
Page 36 - 37



39

CHEFSWEAR

Uniforms for the professionals.
Page 39 - 43



YOUR UNIFORM, YOUR WAY

Welcome to the latest edition of The Artisan Magazine, brought to you by Premier Clothing, the leading supplier of staff uniforms for the hospitality industry.

This is your industry and we know that you live it and breath it every day with a real passion for delivering exceptional service to your customers. Whether you are operating a large pub chain or running a lavish five-star hotel; baking in your bistro or serving street food, you've got your A-team, and we're here to dress them with the latest front-of-house fashions.

Aprons made with durable fabrics are embellished with quirky design accents for character and practicality, whilst our collection of shirts and tees work effortlessly to create that quintessential smart-casual look. There's also a collection of classic chefswear for the talented team in the kitchen and for those who need to identify as a culinary professional at corporate, mobile or private events.

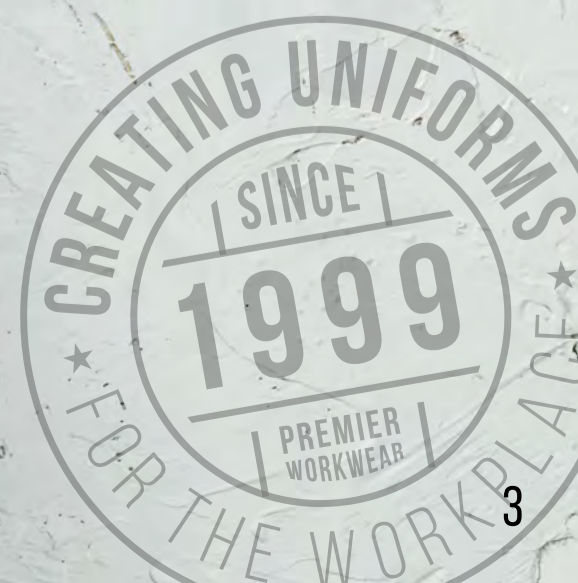
We understand that customers like to see wholesome fayre on the menu with local, organic and homemade produce, so why not serve it to them dressed in uniforms that boast a similar wholesome story, with organic, fairtrade and recycled styles.

We've got a lovely feature that looks at how our supply chain comes together to deliver beautifully branded uniforms for your business, with a spotlight on Neighbourhood Bakehouse in Chester, who have recently enjoyed a Premier uniform makeover.

We hope you enjoy flicking through this magazine and find some inspiration for your own uniform makeover!

PR122 'Regenerate' Bib Apron, page 7, styled with PR219/PR319 'Comis' Cotton Tee, page 25

Front cover: PR121 'Barley' Contrast Stitch Bib Apron, page 13, with PR219/PR319 'Comis' Tees, page 25.





Welcome to the NEIGHBOURHOOD

A branding story brought to you by Premier

Did you know that everyday thousands of businesses provide their staff with Premier uniforms to serve up delicious food and drink to hungry customers? We are delighted to put the spotlight on one of these businesses as they invest in a uniform makeover for their team.

Introducing, Catherine Graham, owner of the Neighbourhood Bakehouse in Chester, who tells us a little bit more about her business and the inspiration behind her new uniform.

How long have you been running the Neighbourhood Bakehouse, Catherine?

We established the Bakehouse two years ago, right at the start of covid, then expanded into a larger premises next door just under a year ago.

You describe your business as an Artisan bakehouse, can you give us an idea of the type of food and drink you serve?

We've been selling sourdough bread since 2010, at our first business, long before it became a 'buzz word'. We love healthy eating and who doesn't love the smell of freshly baked breads? Our variety of homemade cakes are baked on site everyday and there is always a beautiful aroma coming from our bakehouse.

How did you manage through Covid and have you noticed a difference in dining habits now?

We launched Neighbourhood Bakehouse during Covid in 2020! Fortunately for us, our business model was take away only at this time, selling fresh bread, cakes, coffee, sandwiches, local eggs, local milk, etc. When people were off school and work the biggest treat was to take a walk and buy some local goodies. We got to know so many of our neighbours so well, as they came each day as part of their walking routine.



How many front-of-house and kitchen staff do you employ?

We have a wonderful pastry chef, four further chefs with a broad spectrum of international experience, along with a head chef who was trained in France. We have a wide array of food loving employees and one of our main questions during interview stage is, "Tell us what you love about food". Our team are so passionate and they are a mix of students to the more experienced catering professionals.

"Most of all the uniform must reflect our ethos of the business being that we are relaxed, approachable and passionate about what we deliver"

Why do you think it's important to have a staff uniform in your venue?

I believe it gives a sense of pride and professional appearance. The casual uniform in the daytime is relaxed



and comfortable, in the evening, our cocktail makers sport the coolest denim bar aprons.

What do you look for when considering your uniforms?

Most of all the uniform must reflect our ethos of the business being that we are relaxed, approachable and passionate about what we deliver. Functionality plays an important role here with pockets and easy fastenings. The colour and the cut of the fabric accentuates our casual approach to our way of dining.

Branding is really important, and you chose to have your logo embroidered on to these styles.

Can you tell us about the logo?

Our branding signifies our heavenly produce, what better way than to identify this than with our beautiful angel wings.

On practical level how do you manage the laundering of your uniforms

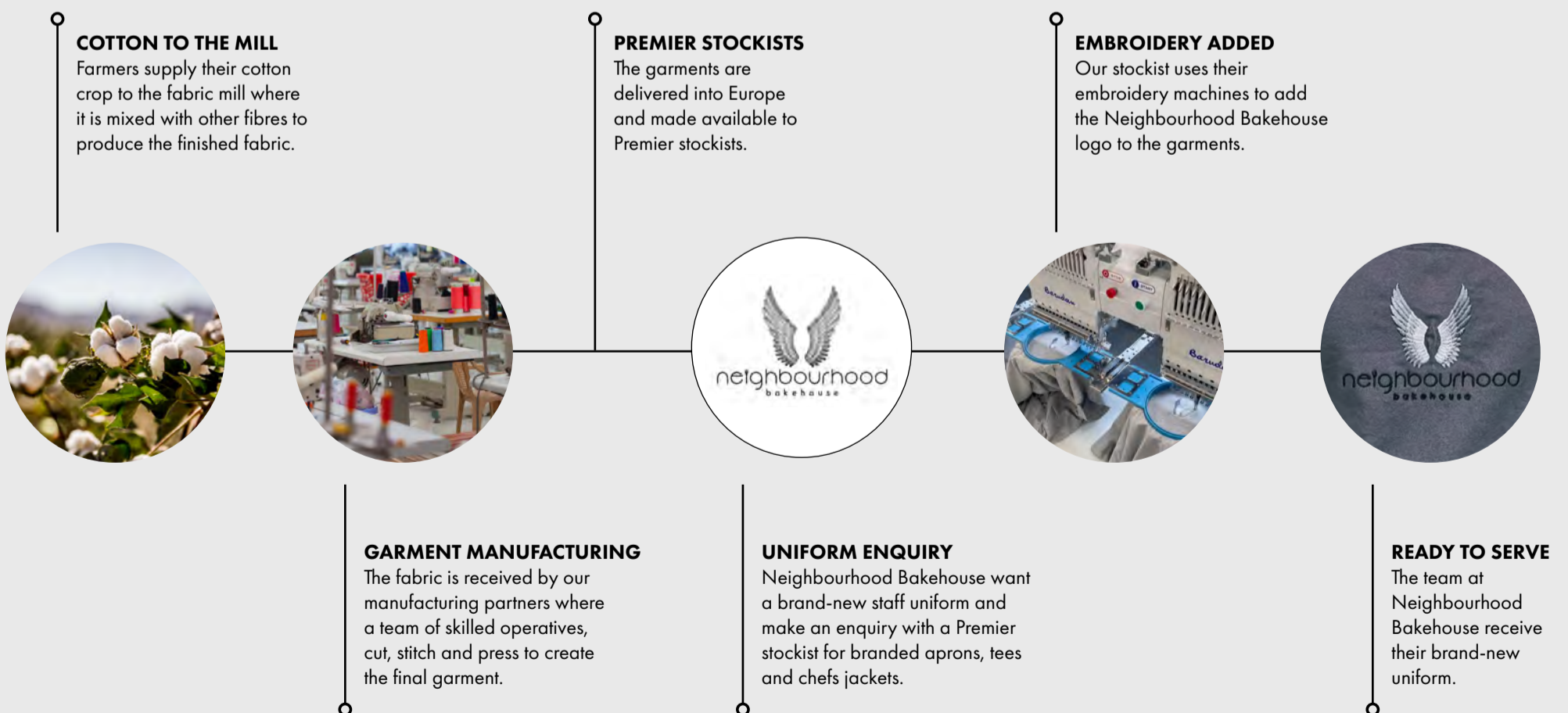
We have in-house laundering service to be sure the best presentation of our team is delivered each and every day and our team absolutely love their new uniforms!



The front-of-house team wearing PR129 'Barista' Bib Aprons, page 19 with PR219 / PR319 'Comis' Cotton Tees, page 25.
The kitchen team wearing PR902 Coolchecker Chef's Jacket, page 41, with 'Select' Chef's Trousers, page 43.

A UNIFORM IN THE MAKING

From the cotton fields to the bakehouse, we'd like to tell a short story about our uniforms.



Creating uniforms to impress your customers is simple and affordable with Premier. If you would like your very own uniform makeover, please contact your local Premier stockist and they will be able to help guide you through the range and offer prices.

If you do not have a Premier stockist, you can make an enquiry at, www.premierworkwear.com



BETTER PACKAGING

We are reducing the amount of packaging for our products and use recycled, compostable and bio-degradable solutions where we can.




REUSING PLASTICS

The recycled polyester in our garments comes from post-consumer raw material, like plastic bottles.




RESPONSIBLE COTTON SOURCING

Where we can, we source cotton that has been grown organically, using less water and without toxic pesticides.




COMMUNITY ENGAGEMENT

It's important to us to give back, which is why we donate and sponsor charities that benefit the communities where our products are made.




GREENER TRANSPORT

We are striving to improve the way we import our goods into Europe and are working with key transportation partners to monitor and reduce the CO₂ levels we produce.



SUSTAINABILITY ROUND UP



WE ARE A MEMBER

Better Cotton™ is the world's leading sustainability initiative for cotton. Their mission is to help cotton communities survive and thrive, while protecting and restoring the environment.

As a Better Cotton™ member we are helping to support this mission.



WE ENCOURAGE ORGANIC FARMING

We are supporting farmers who are transitioning their farms to organic production by purchasing their cotton, which is in-conversion.

We understand that transitioning to organic takes time.



WE SUPPORT PRODUCERS

The FAIRTRADE Cotton Mark means that all of the cotton in the garment is Fairtrade certified, traded, audited and sourced from Fairtrade producers.

We are supporting Fairtrade farmers by purchasing their cotton.



WE USE RECYCLED COTTON

Cotton derived from denim fabrics which have been broken down and regenerated to form a new garment.

We give denim textiles a new lease of life.



WE SOURCE IT

Organic agricultural standards require the cotton crop to be produced without toxic pesticides and synthetic fertilizers and with considerably less water than conventional cotton.

We are sourcing Organic Cotton to help reduce our carbon footprint.



WE REUSE POST-CONSUMER PLASTICS

Polyester made from recycled plastics means less extraction of raw materials and carbon emissions.

We are helping to keep plastic away from oceans and landfill.



PR 122

'REGENERATE' BIB APRON



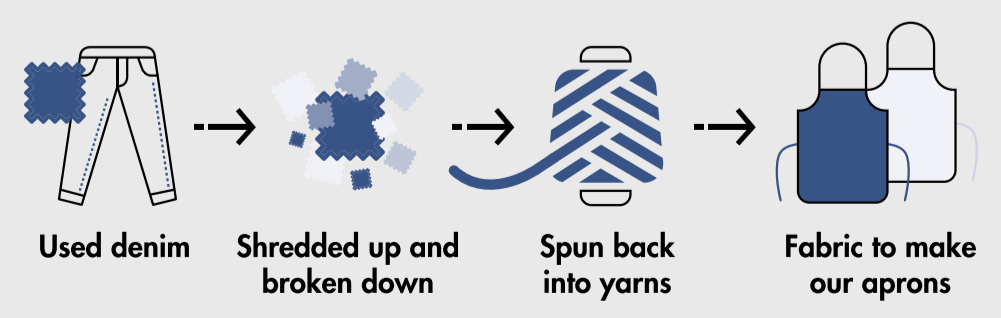
PR122 'REGENERATE' BIB APRON

Recycled Cotton, Recycled Polyester & Recycled Viscose.



Made from recycled cotton, with a element of recycled polyester for stability through the fabric.

FROM JEANS TO APRONS



CONTRAST

DENIM APRONS

PR127

Styled with PR252/PR352
'Maxton' Shirts, page 29

PR128



Contrast pocket with rivet detail



Adjustable buckle

PR127 'DOMAIN' CONTRAST DENIM BIB APRON

PR128 'DOMAIN' CONTRAST DENIM WAIST APRON

70% Cotton, 30% Polyester



BLACK DENIM

INDIGO DENIM

BLACK DENIM

INDIGO DENIM



JEAN STITCH

DENIM APRONS

PR126 JEAN STITCH DENIM BIB APRON

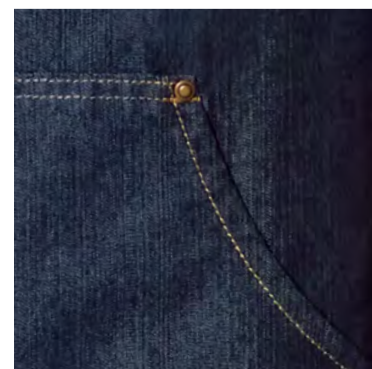
PR125 JEAN STITCH DENIM WAIST APRON

70% Cotton, 30% Polyester

PR126

Styled with PR218/PR318
'Long John' Roll Sleeve Tees,
page 24

PR125



Contrast stitching



Buckle on neckband



'DISTRICT'

BIB APRON

PR134

Styled with PR219 Men's 'Comis' Cotton Tee, page 25



BLACK DENIM

INDIGO DENIM

PR134 'DISTRICT'
WAXED-LOOK BIB APRON
100% Cotton with acrylic coating



BLACK/TAN DENIM

INDIGO/BROWN DENIM

BLACK DENIM

INDIGO DENIM

PR136 'DIVISION' WAXED-LOOK BIB APRON WITH FAUX LEATHER
PR135 'DIVISION' WAXED-LOOK WAIST APRON
100% Cotton with acrylic coating



BLACK/TAN DENIM

INDIGO/BROWN DENIM

BLACK DENIM

INDIGO DENIM



WAXED-LOOK

COTTON APRONS



PR136

PR135

'DIVISION'
WAIST & BIB APRONS

'METRO'

HIP APRON

PR138 'METRO' UTILITY HIP APRON

Canvas: 100% Cotton†
Denim: 70% Cotton, 30% Polyester



Carabiner fastener

Tablet friendly pockets



PR138

Styled with PR319 Women's 'Comis' Cotton Tee, page 25



BLACK †

INDIGO DENIM

BLACK DENIM

KHAKI †



DENIM COTTON

BIB APRON

Styled with PR318 Women's 'Long-John' Roll-Sleeve Tee, page 24



BLACK DENIM

INDIGO DENIM

BROWN DENIM

Antique brass/gunmetal buckle on neckband



Certified by Control Union
CB-CUC-1119398

PR113 DENIM COTTON BIB APRON ORGANIC & FAIRTRADE CERTIFIED

100% Cotton, Organic & Fairtrade Certified



'BARLEY'

CONTRAST STITCH BIB APRON



PR121 'BARLEY' CONTRAST STITCH BIB APRON

65% Recycled Polyester, 35% Cotton



INCLUDES



PR120

Styled with PR219 Men's 'Comis' Cotton Tee, page 25

RECYCLED POLYESTER & ORGANIC COTTON

BIB APRON

PR120 RECYCLED POLYESTER & COTTON BIB APRON, ORGANIC & FAIRTRADE CERTIFIED

65% Recycled Polyester, 35% Cotton, Organic & Fairtrade Certified



Certified by Control Union CB-CUC-1119398



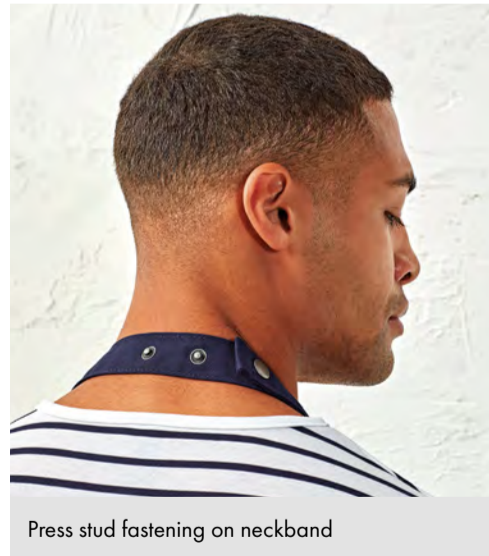
Certified by Control Union CB-CUC-1119398



PR132

'CHINO'

COTTON APRON



Press stud fastening on neckband

PR132 'CHINO' BIB APRON

100% Cotton



Styled with PR218 Men's 'Long-John' Roll-Sleeve Tee, page 24

'ESPRESSO'

BIB APRON

PREMIER[®]

UNIFORMS THAT WORK FOR YOU



PR 123



BLACK/BLACK

BLACK/BROWN



NAVY/BROWN

KHAKI/BROWN

PR123 'ESPRESSO'
BIB APRON

65% Polyester, 35% Cotton
with Faux Leather trim



Styled with PR318 Women's 'Long-John' Roll-Sleeve Tee, page 24

100% COTTON

ORGANIC IN-CONVERSION

20
Colours



Styled with PR219 Men's 'Comis' Cotton Tee, page 25

PR102



PR102 100% COTTON,
ORGANIC IN-CONVERSION

100% In-Conversion Organically Grown Cotton

“We are supporting farmers who are transitioning their farms to organic production by purchasing their cotton, which is in-conversion”



Contains 100% OCS Certified Organically Grown In-Conversion Cotton
Certified by Control Union
CB-CUC-1119398



'ANNEX'

OXFORD APRON

PR144 'ANNEX' OXFORD BIB APRON

100% Cotton, yarn-dyed Oxford Weave

PR144

Styled with PR319 Women's 'Comis' Cotton Tee, page 25



NEW
COLOUR



PR112

Styled with PR217/PR317 Roll-Sleeve 'Cross-Dye' Poplin Shirts, page 33



PR114

COTTON APRONS

ORGANIC & FAIRTRADE CERTIFIED



PR112 COTTON BIB APRON
PR114 COTTON WAIST APRON
100% Cotton, Organic & Fairtrade Certified



CROSS-BACK BACK

'BARISTA' BIB APRON

PREMIER[®]

UNIFORMS THAT WORK FOR YOU

PR129

Apron featured on pages 4-5.

Styled with PR358 Women's Banded Collar
'Grandad' Shirt, page 32



Choose alternative apron straps for an individual look.



PR129 CROSS-BACK 'BARISTA' BIB APRON

Canvas: 100% Cotton

Denim: 70% Cotton, 30% Polyester†

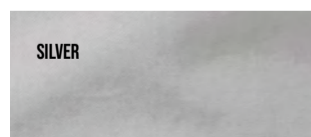
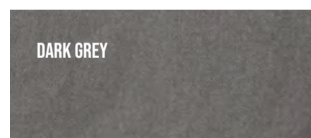
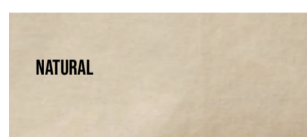
PR119 CROSS-BACK INTERCHANGEABLE APRON STRAPS

Denim, Striped and Faux Leather choices



'CALIBRE' APRONS

100% COTTON CANVAS



PR131

PR131 'CALIBRE' WAIST APRON
PR130 'CALIBRE' BIB APRON
PR137 'CALIBRE' POCKET APRON
 100% Cotton Canvas





PR130

PR137



Styled with PR219/PR319 'Comis' Cotton Tees, page 25
and PR318 Women's 'Long-John' Roll-Sleeve Tee, page 24

A SPLASH OF COLOUR

WITH UP TO 62 SHADES TO CHOOSE FROM



BIB, POCKET & WAIST STYLES

Outfit 1: PR319 Women's 'Comis' Cotton-Rich Tee, page 25, PR158 'Colours Collection' Waist Apron with Pocket, opposite, PR570 Women's Performance 'Chino' Jeans, page 36
 Outfit 2: PR252 Men's 'Maxton' Check Long Sleeve Shirt, page 29, PR150 'Colours Collection' Bib Apron, below, PR560 Men's Performance 'Chino' Jeans, page 36
 Outfit 3: PR200 Men's Long Sleeve Poplin Shirt, page 30, PR154 'Colours Collection' Bib Apron with Pocket, below, PR560 Men's Performance 'Chino' Jeans, page 36
 Outfit 4: PR218 Men's 'Long-John' Roll-Sleeve Tee, page 24, PR151 'Colours Collection' Mid-Length Apron, opposite, PR560 Men's Performance 'Chino' Jeans, page 36
 Outfit 5: PR352 Women's 'Maxton' Check Long Sleeve Shirt, page 29, PR155 'Colours Collection' 3 Pocket Waist Apron, opposite, PR570 Women's Performance 'Chino' Jeans, page 36

62
Colours

PR150 'COLOURS COLLECTION' BIB APRON

Adjustable buckle on neckband

CORNFLOWER	PINK	MUSTARD	CAMEL
ROYAL	ROSE	SUNFLOWER	NATURAL
MARINE BLUE	FUCHSIA	YELLOW	WHITE*
NAVY	MAGENTA	LEMON	SILVER
INDIGO DENIM	HOT PINK	LIME	GREY DENIM
BLUE DENIM	RASPBERRY CRUSH	OASIS GREEN	SAGE
CYAN	RED	MOSS GREEN	STEEL
LIGHT BLUE	SALSA	OLIVE	BLACK DENIM
PEACOCK	STRAWBERRY RED	AQUA	DARK GREY
MID BLUE	ORANGE	DUCK EGG BLUE	CHARCOAL
SAPPHIRE	TERRACOTTA	TURQUOISE	BLACK*
LILAC	CHESTNUT	TEAL	
LAVENDER	BROWN	EMERALD	
PURPLE	MOCHA	KELLY	
RICH VIOLET	MUSHROOM	PISTACHIO	
AUBERGINE	LATTE	APPLE	
BURGUNDY	KHAKI	BOTTLE	



50
Colours

PR154 'COLOURS COLLECTION' BIB APRON WITH POCKET

Tablet friendly centre pocket with combined pen slot

NAVY	LIME	SILVER
INDIGO DENIM NEW	LEMON	STEEL
ROYAL	SUNFLOWER	SAGE
MARINE BLUE	TERRACOTTA	GREY DENIM NEW
BLUE DENIM NEW	ORANGE	DARK GREY
MID BLUE	CHESTNUT	CHARCOAL NEW
SAPPHIRE	CAMEL NEW	BLACK DENIM NEW
TURQUOISE	KHAKI	BLACK
TEAL	LATTE NEW	BROWN
DUCK EGG NEW	NATURAL	AUBERGINE
APPLE	WHITE	BURGUNDY
EMERALD	AQUA	RED
BOTTLE	LIGHT BLUE	STRAWBERRY RED
MOSS GREEN	LILAC	HOT PINK
OASIS GREEN	PINK	FUCHSIA
OLIVE	RICH VIOLET	ROSE
MOCHA	PURPLE	



PR154

PR150



24

PR158 'COLOURS COLLECTION'
WAIST APRON WITH POCKET

Colours

Centre pocket with combined pen slot

ROYAL	NATURAL
NAVY	SUNFLOWER
TURQUOISE	LIME
PURPLE	OLIVE
PINK	AQUA
HOT PINK	EMERALD
FUCHSIA	BOTTLE
BURGUNDY	SAGE
RED	WHITE
ORANGE	SILVER
BROWN	DARK GREY
KHAKI	BLACK



36

PR151 'COLOURS COLLECTION'
MID-LENGTH APRON

Colours

90cm self-fabric ties

ROYAL	OASIS GREEN	OLIVE
MARINE BLUE	LIME	AQUA
NAVY	SUNFLOWER	TEAL
TURQUOISE	NATURAL	EMERALD
SAPPHIRE	KHAKI	APPLE
PURPLE	MOCHA	BOTTLE
RICH VIOLET	RED	SAGE
AUBERGINE	STRAWBERRY RED	WHITE
HOT PINK	ORANGE	SILVER
PINK	TERRACOTTA	STEEL
FUCHSIA	CHESTNUT	DARK GREY
BURGUNDY	BROWN	BLACK



PR155 'COLOURS COLLECTION'
3 POCKET WAIST APRON

Three open pockets



'LONG-JOHN'

ROLL-SLEEVE TEE



PR318



PR218



PR218 MEN'S 'LONG-JOHN'
ROLL-SLEEVE TEE

Sizes: XS/30" - 3XL/54"

PR318 WOMEN'S
'LONG-JOHN'
ROLL-SLEEVE TEE

Sizes: XS/8 - 2XL/18





PR319

PR219

'COMIS'

COTTON TEE



COTTON RICH FOR SOFTNESS WITH RECYCLED POLYESTER FOR DURABILITY

PR219 MEN'S 'COMIS'
COTTON TEE
Sizes: S/34" – 3XL/54"

PR319 WOMEN'S 'COMIS'
COTTON TEE
Sizes: XS/8 – 2XL/18

*Grey Marl does not contain recycled polyester



JEAN STITCH

DENIM SHIRTS

PR222 MEN'S JEAN STITCH DENIM SHIRT

Sizes: XS/30" - 3XL/54"

PR322 WOMEN'S JEAN STITCH DENIM SHIRT

Sizes: XS/8 - 3XL/20



ORGANIC

CHAMBRAY SHIRTS



PR247 MEN'S CHAMBRAY SHIRT
ORGANIC & FAIRTRADE CERTIFIED

Sizes: S/34" - 3XL/54"

PR347 WOMEN'S CHAMBRAY SHIRT
ORGANIC & FAIRTRADE CERTIFIED

Sizes: XS/8 - 3XL/20



Certified by Control Union
CB-CUC-1119398



'MULLIGAN'

BAR SHIRT

PREMIER[®]

UNIFORMS THAT WORK FOR YOU

PR250



PR350



PR250 MEN'S 'MULLIGAN'
LONG SLEEVE SHIRT

Sizes: S/34" - 3XL/54"

PR350 WOMEN'S 'MULLIGAN'
LONG SLEEVE SHIRT

Sizes: XS/8 - 2XL/18



'GINMILL'

BAR SHIRT

PR254 MEN'S 'GINMILL'
CHECK LONG SLEEVE SHIRT

Sizes: S/34" - 3XL/54"

PR354 WOMEN'S 'GINMILL'
CHECK LONG SLEEVE SHIRT

Sizes: XS/8 - 2XL/18



PR254

PR354



PR221 MEN'S SHORT SLEEVE
MICROCHECK GINGHAM SHIRT

Sizes: XS/30" – 3XL/54"

PR321 WOMEN'S SHORT SLEEVE
MICROCHECK GINGHAM SHIRT

Sizes: XS/8 – 3XL/20

PR221

PR321



PASTA
WINE AND DINE

PASTA
WINE AND DINE

MICROCHECK

GINGHAM SHIRTS

PR220 MEN'S LONG SLEEVE
MICROCHECK GINGHAM SHIRT

Sizes: XS/30" – 3XL/54"

PR320 WOMEN'S LONG SLEEVE
MICROCHECK GINGHAM SHIRT

Sizes: XS/8 – 3XL/20



'MAXTON'

CHECK

PR252 MEN'S 'MAXTON' CHECK
LONG SLEEVE SHIRT

Sizes: S/34" – 3XL/54"

PR352 WOMEN'S 'MAXTON' CHECK
LONG SLEEVE SHIRT

Sizes: XS/8 – 2XL/18



PR252

PR352





PR200

27

Colours

PR300



SLIM FIT

PR204 MEN'S LONG SLEEVE SLIM-FIT POPLIN SHIRT

Sizes: 14.5"/37cm - 17.5"/44.5cm



4

Colours

CLASSIC

PR200 MEN'S LONG SLEEVE POPLIN SHIRT

Sizes: 14.5"/37cm - 23"/59cm

PR300 WOMEN'S LONG SLEEVE POPLIN SHIRT

Sizes: 2XS/6 - 8XL/30

PR202 MEN'S SHORT SLEEVE POPLIN SHIRT

Sizes: 14.5"/37cm - 23"/59cm

PR302 WOMEN'S SHORT SLEEVE POPLIN SHIRT

Sizes: 2XS/6 - 8XL/30



3

Colours

PR207

SUPREME

PR207 MEN'S LONG SLEEVE SUPREME POPLIN SHIRT

Sizes: 14.5"/37cm - 19"/48cm

PR307 WOMEN'S LONG SLEEVE SUPREME POPLIN SHIRT

Sizes: 8/XS - 26/6XL



LIGHT BLUE

BLACK

PR209 MEN'S SHORT SLEEVE SUPREME POPLIN SHIRT

Sizes: 14.5"/37cm - 19"/48cm

PR309 WOMEN'S SHORT SLEEVE SUPREME POPLIN SHIRT

Sizes: 8/XS - 26/6XL



4

Colours

SILVER

WHITE

PALE BLUE

BLACK

STRETCH FIT

PR244 MEN'S STRETCH-FIT COTTON POPLIN LONG SLEEVE SHIRT

Sizes: XS/30" - 4XL/58"

PR344 WOMEN'S STRETCH-FIT COTTON POPLIN LONG SLEEVE SHIRT

Sizes: XS/8 - 3XL/20

PR246 MEN'S STRETCH-FIT COTTON POPLIN SHORT SLEEVE SHIRT

Sizes: XS/30" - 4XL/58"

PR346 WOMEN'S STRETCH-FIT COTTON POPLIN SHORT SLEEVE SHIRT

Sizes: XS/8 - 3XL/20



PR346



27

Colours

PR202

PR302



POPLIN SHIRTS

CHOOSE YOUR COLOUR,
YOUR FIT & YOUR FABRIC



CLASSIC LONG AND SHORT SLEEVE POPLIN SHIRT IN UP TO 27 COLOURS

'GRANDAD'

SHIRT



PR258

PR358



PR258 MEN'S BANDED COLLAR
'GRANDAD' LONG SLEEVE SHIRT

Sizes: XS/30" - 3XL/54"

PR358 WOMEN'S BANDED COLLAR
'GRANDAD' LONG SLEEVE SHIRT

Sizes: XS/8 - 2XL/18



HERRINGBONE

WAISTCOAT



PR626

PR625



PR625 MEN'S HERRINGBONE WAISTCOAT

Sizes: XS/32" - 2XL/52"

PR626 WOMEN'S HERRINGBONE
WAISTCOAT

Sizes: XS/8 - 2XL/18





ROLL SLEEVE

BAR SHIRT



PR206 MEN'S ROLL-SLEEVE POPLIN SHIRT

Sizes: S/34" - 2XL/50"

PR306 WOMEN'S ROLL-SLEEVE POPLIN SHIRT

Sizes: XS/8 - 2XL/18

'CROSS-DYE'

BAR SHIRT



PR217 MEN'S ROLL-SLEEVE
'CROSS-DYE' POPLIN SHIRT

Sizes: XS/30" - 3XL/54"

PR317 WOMEN'S ROLL-SLEEVE
'CROSS-DYE' POPLIN SHIRT

Sizes: XS/8 - 3XL/20





'ARTISAN'

FLEECE GILETS & JACKETS



NEW
COLOUR

BLACK/
BROWN

BLACK/
BLACK

BURGUNDY/
BROWN

MOSS GREEN/
BROWN

NAVY/
BROWN

PR803 MEN'S 'ARTISAN'
FLEECE GILET

Sizes: S/34" - 3XL/54"

PR804 WOMEN'S 'ARTISAN'
FLEECE GILET

Sizes: XS/8 - 3XL/20

NEW
STYLE



PR823



PR824



PR823 MEN'S 'ARTISAN' FLEECE JACKET

Sizes: S/34" - 3XL/54"

PR824 WOMEN'S 'ARTISAN' FLEECE JACKET

Sizes: XS/8 - 3XL/20





PR570

PR560



STRETCH



CHINO

JEANS

COMFORT STRETCH



PR560 MEN'S PERFORMANCE
'CHINO' JEANS

Sizes: XS/30" – 4XL/44"

PR570 WOMEN'S PERFORMANCE
'CHINO' JEANS

Sizes: XS/8 – 5XL/24



BRACES

PR701 CLIP-ON
TROUSER BRACES

One size



PR701



PR562 MEN'S PERFORMANCE
'CHINO' SHORTS

Sizes: XS/30" – 4XL/44"

PR572 WOMEN'S PERFORMANCE
'CHINO' SHORTS

Sizes: XS/8 – 5XL/24

CHINO

SHORTS

 **PREMIER**®

UNIFORMS THAT WORK FOR YOU

NEW
STYLE



PR572

PR562



STRETCH



MIX & MATCH

Have fun choosing colours, fabrics, prints and patterns to create your very own individual look.



PR321 Women's Short Sleeve Microcheck Gingham Shirt, page 28, PR126 Jean Stitch Bib Apron, page 9,
PR122 'Regenerate' Bib Apron, page 7, PR250 Men's 'Mulligan' Long Sleeve Shirt, page 27,
PR127 'Domain' Contrast Denim Bib Apron, page 8.

Model is wearing PR127 'Domain' Contrast Denim Bib Apron with PR252 Men's 'Maxton' Check Long Sleeve Shirt.



EASY FASTENING

STUDED CHEF'S JACKETS

 **PREMIER**®

UNIFORMS THAT WORK FOR YOU

PR665

PR664



PR665 LONG SLEEVE
STUDED CHEF'S JACKET
Sizes: XS/30" - 3XL/54"

PR664 SHORT SLEEVE
STUDED CHEF'S JACKET
Sizes: XS/30" - 3XL/54"



CLASSIC

CHEF'S JACKETS



PR657



PR656



PR657 LONG SLEEVE CHEF'S JACKET

Sizes: XS/30" - 4XL/58"



PR656 SHORT SLEEVE CHEF'S JACKET

Sizes: XS/30" - 4XL/58"



ESSENTIAL

CHEF'S JACKETS



PR901

PR900



PR900 'ESSENTIAL' SHORT SLEEVE CHEF'S JACKET

Sizes: XS/30" - 4XL/58"

PR901 'ESSENTIAL' LONG SLEEVE CHEF'S JACKET

Sizes: XS/30" - 4XL/58"



COOLCHECKER®

CHEF'S JACKETS



PR902 COOLCHECKER®
SHORT SLEEVE CHEF'S JACKET

Sizes: XS/30" - 2XL/50"

PR903 COOLCHECKER®
LONG SLEEVE
CHEF'S JACKET

Sizes: XS/30" - 2XL/50"



Coolchecker® mesh back panel for breathability through the fabric



PREMIER[®]

UNIFORMS THAT WORK FOR YOU

ZIPPED

CHEF'S JACKET



PR906 CHEF'S ZIP-CLOSE
SHORT SLEEVE JACKET

Sizes: XS/30" - 2XL/50"



CLASSIC

DENIM STYLE



PR660 DENIM CHEF'S JACKET

Sizes: XS/30" - 3XL/54"



CHEF'S TROUSERS



PR556



PR556 CHEF'S 'ARTISAN' JOGGER BOTTOMS

Sizes: XS/28" - 2XL/44"



PR555



PR555 'ESSENTIAL' CHEF'S CARGO POCKET TROUSERS

Sizes: XS/28" - 3XL/46"

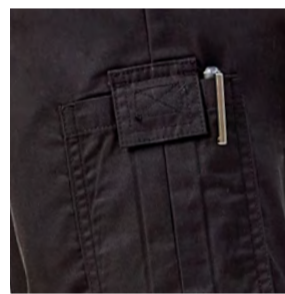


PR554



PR554 CHEF'S 'SELECT' SLIM LEG TROUSERS

Sizes: XS/28" - 2XL/44"



Pen pocket on upper leg



CHEF'S STYLE



1.



2.



3.



4.



OUTFIT 1: PR906 Chef's Zipped Jacket, page 42, styled with PR144 'Annex' Oxford Bib Apron, page 17.
 OUTFIT 2: PR660 Denim Chef's Jacket, page 42, styled with PR121 'Barley' Contrast Stitch Bib Apron, page 13.
 OUTFIT 3: PR656 Classic Chef's Jacket page 40, styled with PR135 'Division' Waxed Look Denim Waist Apron, page 10.
 OUTFIT 4: PR900 'Essential' Chef's Jacket, page 41, styled with PR137 'Calibre' Pocket Bib Apron, page 20



PREMIER[®]

UNIFORMS THAT WORK FOR YOU

APRONS



SHIRTS & TEES



CHEFSWEAR

