



AWDis



OUR COLOURS

| | | | | | | | | |
|----------------------------|--------------------------------|----------------------------|-----------------------------|----------------------------|-------------------------------|-----------------------------|----------------------------|--------------------------|
| 1 | 2 | 3 | 4 | 5 | 6 | 7 | 8 | 9 |
| (New) French Navy | Oxford Navy / Cobalt Blue | Denim Blue | Ink Blue | Royal Blue | Bright Royal / Deep Royal | Reflex Blue | Sapphire Blue | Tropical Blue |
| 10 | 11 | 12 | 13 | 14 | 15 | 16 | 17 | 18 |
| Airforce Blue | Dusty Blue | Cornflower Blue | Sky Blue | Hawaiian Blue | Turquoise Surf | Seafoam | Lagoon Blue | Deep Sea Blue |
| 19 | 20 | 21 | 22 | 23 | 24 | 25 | 26 | 27 |
| Jade | Peppermint | Mint | Turquoise Blue | Forest Green | Bottle Green | Combat Green | Mineral Green | Olive Green |
| 28 | 29 | 30 | 31 | 32 | 33 | 34 | 35 | 36 |
| Moss Green | Dusty Green | Earthy Green | Fern Green | Kelly Green | Spring Green | Lime Green | Pistachio Green | Apple Green |
| 37 | 38 | 39 | 40 | 41 | 42 | 43 | 44 | 45 |
| Hot Chocolate | Chocolate Fudge Brownie | Caramel Toffee | Caramel Latte | Mocha Brown | Desert Sand | Sand Dune | Natural Stone | Nude |
| 46 | 47 | 48 | 49 | 50 | 51 | 52 | 53 | 54 |
| Soft Peach | Peach Perfect | Peach Sorbet | Vanilla Milkshake / Natural | Sherbet Lemon | Sun Yellow | Citrus | Mustard | Mango Tango |
| 55 | 56 | 57 | 58 | 59 | 60 | 61 | 62 | 63 |
| Gold | Orange Crush | Pumpkin Pie | Ginger Biscuit | Burnt Orange | Sunset Orange | Orange Flame | Red Hot Chili | Brick Red |
| 64 | 65 | 66 | 67 | 68 | 69 | 70 | 71 | 72 |
| Red Rust | Soft Red | Fire Red | Burgundy | Plum | Dusty Lilac | Wild Mulberry | Purple | Ultra Violet |
| 73 | 74 | 75 | 76 | 77 | 78 | 79 | 80 | 81 |
| Magenta Magic | Pinky Purple | Lavender | Twilight Purple | True Violet | Digital Lavender | Festival Fuchsia | Cranberry | Hot Pink |
| 82 | 83 | 84 | 85 | 86 | 87 | 88 | 89 | 90 |
| Hyper Pink | Lipstick Pink | Dusty Purple | Dusty Rose | Dusty Pink | Candyfloss Pink | Baby Pink | Blush | Jet Black |
| 91 | 92 | 93 | 94 | 95 | 96 | 97 | 98 | 99 |
| Deep Black / Solid Black | Storm Grey | Shark Grey | Steel Grey | Iron Grey | Moondust Grey | Arctic White / Solid White | Navy / Charcoal | Navy / Navy Melange |
| 100 | 101 | 102 | 103 | 104 | 105 | 106 | 107 | 108 |
| New French Navy / Fire Red | New French Navy / Heather Grey | New French Navy / Sky Blue | Oxford Navy / Arctic White | French Navy / Arctic White | Oxford Navy / Candyfloss Pink | Oxford Navy / Hawaiian Blue | Oxford Navy / Heather Grey | Oxford Navy / Sun Yellow |



WE
ARE
COLOUR



CONTENTS

ESSENTIALS

8-51

In the AWDIs Essentials section explore a world of limitless colours in our product ranges, all meticulously crafted to the highest standards of quality. From the timeless Classic JH001 Hoodie to essential T-shirts, bottoms, and our heavyweight and Organic options, this is your ultimate destination for AWDIs Classics.

FASHION

52-67

Explore AWDIs fashion, a collection of styles that allow you to express any identity. These pieces are trend-driven, retail-ready and crafted with a modern fit, ensuring you stay on the cutting edge of the latest trends. Here you can find fashion focused cropped styles, vibrant tie-dye and camo pieces, these elevated fashion essentials are your key to making a bold statement.

CASUAL

68-85

AWDis casual wear is effortlessly tailored for everyday use. Whether for rebranding, retail requirements, or casual uniforms, our collection has you covered. Explore everything from stylish denim pieces and sleek polos to comfortable recycled cotton sweaters and quarter-zip sweatshirts. Find the perfect blend of versatility and comfort in AWDIs casual wear.

SPORTSWEAR

86-109

AWDis Sportswear is designed with practicality and comfort in mind, deeply rooted in the world of sports. This section features a comprehensive collection of our classic sports styles, from tops to bottoms, our sportswear is designed to equip you for the most demanding training days.

PERFORMANCE

110-133

Take your sportswear to the next level with AWDIs Performance. These styles transcend the ordinary, offering more than just the basics by incorporating technical performance fabrics and enhanced functionality. Explore a range that includes performance-enhancing running tops, women's workout sets, and even printable sliders, each piece is crafted to deliver both style and optimal performance.

KIDSWEAR

134-163

Discover everything you need with the AWDIs Kids range, an ideal choice for school and beyond. From uniforms to PE kits and after-school clubs, our collection is thoughtfully designed to cater to all their needs. Our styles are produced to last, ensuring durability for their everyday adventures.

COLOUR GUIDE

164-165

FABRIC GUIDE

166-167

PRINT GUIDE

168-169

BRAND GUIDE

170-171

FIT GUIDE

172-173

AWDis

The original Home of the Hoodie - we are curators of identity. Our product ranges are created to provide the widest choice of blanks designed specifically for customisation.





Our Story

Starting with just one hoodie in 30 colours, we now offer a diverse collection of quality garments. Whether it's individuals marking special moments, crafting unique brands, or forming tight-knit clubs and teams, AWDiS stands as a reliable companion. We cater to schools, universities, charities, and even large corporations - because expressing identity knows no bounds when AWDiS is in the picture.

Our History

Over a decade ago saw the launch of the iconic JH001. Fast-forward to now, with 90 colours in the JH001, we have never looked back. Each product offering is designed with customers' needs in mind - from casual combinations, to sportswear, sustainable products, classic T's, and everything in-between. AWDiS has the widest range of colours and sizes available on the market - we are market leaders in printability.

AWDiS Architecture

All our market leading brand names (formerly Just Hoods, Just Cool, Ecologie, Just Ts, Just Polos, So Denim and AWDiS Academy) will now be easier to find, explore, compare, and combine as they will now sit exclusively under the AWDiS umbrella. While the individual brand names may transition, their exceptional products will remain within carefully curated categories, catering to your preferences and needs as before. From cosy hoodies to cutting-edge sportswear, the commitment to delivering excellence remains unchanged.



Why choose AWDiS

Doing the right thing runs through the heart of everything we do, and that is why we work so closely with our global partners to do what we can to make the world a better place. In 2022, we removed all virgin plastic from our packaging and replaced it with 100% recycled bags. For 2023, we have gone a step further and removed 80% of our packaging completely. Where we cannot remove packaging, we are transferring to 100% certified compostable bags, reducing our environmental impact significantly.



At the heart of our ethos lies the values of family and community. Our product range is designed to allow for expression of identity, giving our customers the canvas to push and explore the boundaries of creativity.

We focus on colour, range, style and printability.

So
DENIM

JustHoods

AWDiS
ACADEMY

JustCool

ecologie.

JustTs

JustPolos



JH001

JC001

JT100

ESSENTIALS



JH230

| | | |
|--------|---------------------------------|----|
| JH001 | College Hoodie | 10 |
| JH072 | College Cuffed Jogpants | 13 |
| JH201 | Organic Hoodie | 14 |
| JT100 | The 100 T | 16 |
| EA001 | Cascades Organic T | 17 |
| JH001F | Women's College Hoodie | 18 |
| JT100F | The 100 Women's T | 19 |
| EA001F | Cascades Organic Women's T | 19 |
| JH030 | AWDis Sweat | 23 |
| JH030F | Women's AWDis Sweat | 24 |
| JH230 | Organic Sweat | 25 |
| JH050 | Zoodie | 27 |
| JH050F | Women's College Zoodie | 28 |
| JH250 | Organic Zoodie | 29 |
| JH003 | Varsity Hoodie | 31 |
| JH009 | Baseball Hoodie | 32 |
| JH074 | Tapered Track Pant | 32 |
| JH053 | Varsity Zoodie | 33 |
| JH063 | Baseball Zoodie | 33 |
| JH043 | Varsity Jacket | 34 |
| JH120 | Heavyweight Signature Hoodie | 38 |
| JH305 | Women's Relaxed Hoodie | 41 |
| JT009 | Oversize 100 T | 42 |
| EA006 | Arrow Recycled Heavy Oversize T | 43 |
| JT019 | Oversize 100 Long Sleeve T | 44 |
| EA032 | Crater Recycled Sweatshirt | 47 |
| EA070 | Crater Recycled Jogpants | 47 |
| EA042 | Crater Recycled Hoodie | 47 |
| JH101 | Graduate Heavyweight Hoodie | 48 |
| JH080 | Campus Shorts | 48 |
| JH150 | Graduate Heavyweight Zoodie | 49 |
| JH130 | Graduate Heavyweight Sweat | 49 |
| JH052 | Chunky Zoodie | 51 |
| JH100 | Chunky Hoodie | 51 |

THE JH001

COLLEGE HOODIE **NEW COLOURS**

80% Ringspun Cotton / 20% Polyester*
280gsm



Scan for more info

Shark Grey

Digital Lavender

Sunset Orange

Natural Stone



| | | | | | | | | | | | | | | |
|----|----|----|----|----|-------|----|----|----|----|----|----|----|--------|--------|
| 1 | 2 | 3 | 4 | 5 | 6 NEW | 8 | 9 | 10 | 11 | 12 | 13 | 14 | 15 | 16 NEW |
| 17 | 18 | 19 | 20 | 23 | 24 | 25 | 27 | 28 | 29 | 30 | 32 | 33 | 34 | 35 |
| 36 | 37 | 38 | 39 | 40 | 41 | 42 | 44 | 45 | 47 | 49 | 50 | 51 | 52 NEW | 53 |

* Heather and marl fabrications may vary.
Please scan QR code for details

THE ORIGINAL



| | | | | | | | | | | | | | | |
|----|----|----|----|----|----|----|----|-----|-----------|-----|-----|-----|-----|-----|
| 55 | 56 | 57 | 58 | 59 | 60 | 62 | 63 | 64 | 65 NEW | 66 | 67 | 68 | 69 | 70 |
| 71 | 72 | 73 | 74 | 75 | 77 | 78 | 79 | 80 | 81 | 83 | 84 | 85 | 86 | 87 |
| 88 | 90 | 91 | 92 | 93 | 94 | 96 | 97 | 199 | 200 | 201 | 202 | 203 | 204 | 205 |

90 COLOURS

Seafoam

Arctic
White

JH001

COLLEGE HOODIE

80% Ringspun Cotton / 20% Polyester*
280gsm



Scan for
more info



Lavender



Blue
Lagoon

Heather
Grey

JH072

COLLEGE CUFFED JOGPANTS

80% Ringspun Cotton / 20% Polyester*
280gsm

1 67 90 91 97 199 201



Scan for
more info

* Heather and marl fabrications may vary.
Please scan QR code for details

Natural Stone



Ink Blue



JC281
Black
Page 119

JH201 **NEW COLOURS**

ORGANIC HOODIE

80% Organic Cotton / 20% Recycled Polyester*
280gsm

- 1
- 4
- 5
- 13 NEW
- 24
- 44 NEW
- 53
- 66
- 67
- 75 NEW
- 88
- 91
- 97
- 199
- 201



Scan for more info

* Heather and charcoal fabrications may vary. Please scan QR code for details

Sky Blue

Lavender

JT100 **NEW COLOURS**

THE 100 T

100% Combed Ringspun Cotton*
140gsm

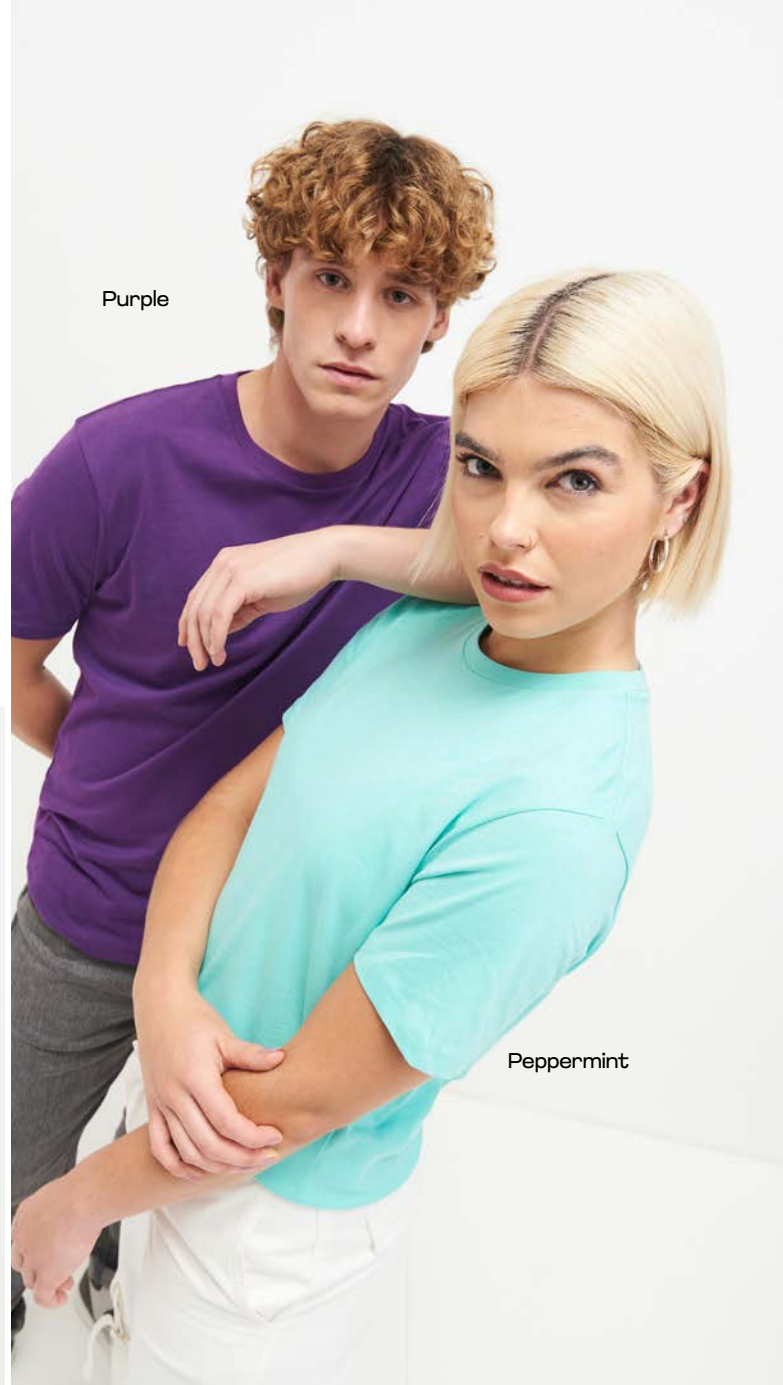
| | | | | | | | | | | |
|-----------|----|-----------|----|----|----|----|-----------|----|-----|-----|
| 2 | 4 | 5 | 8 | 13 | 19 | 20 | 24 NEW | 25 | 29 | 30 |
| 32 | 39 | 42 NEW | 45 | 49 | 50 | 53 | 54 | 66 | 67 | 70 |
| 71 NEW | 75 | 76 | 84 | 86 | 88 | 91 | 96 | 97 | 199 | 201 |



Scan for
more info



Jade



Purple

Peppermint

* Heather and charcoal fabrications may vary.
Please scan QR code for details

EA001

CASCADES ORGANIC T

100% Organic Cotton
150gsm

| | | | | | | | |
|----|----|----|----|----|----|-----|-----|
| 2 | 4 | 5 | 24 | 27 | 43 | 46 | 49 |
| 51 | 53 | 66 | 67 | 90 | 97 | 199 | 201 |



Scan for
more info



Ink Blue

Fire Red



FEMININE FIT

Tailored for comfort and fashion, these pieces are crafted with precision, ensuring a perfect fit. From the soft embrace of luxurious fabrics to the thoughtful consideration of design, our women's collection is a celebration of femininity.

JT100F
Dusty Pink



JH001F WOMEN'S COLLEGE HOODIE

80% Ringspun Cotton / 20% Polyester*
280gsm

| | | | | | | |
|----|----|----|----|-----|-----|-----|
| 1 | 2 | 5 | 8 | 10 | 13 | 19 |
| 20 | 24 | 29 | 45 | 49 | 51 | 66 |
| 67 | 68 | 71 | 78 | 81 | 86 | 87 |
| 88 | 90 | 91 | 97 | 199 | 201 | 203 |



Scan for
more info

Dusty Pink

JH001F
Dusty Green



JH001F
Digital Lavender



JT100F
Oxford Navy



EA001F
Jet Black



JT100F
THE 100 WOMEN'S T
100% Combed Ringspun Cotton*
140gsm



Scan for
more info

2 86 91 97

EA001F
CASCADES ORGANIC
WOMEN'S T
100% Organic Cotton
150gsm



Scan for
more info

2 90 97 201

AWDis

NEW 2024 COLOURS

Seafoam

Citrus

Bright Royal

Soft Red

JH001
Soft Red



90 COLOURS AND COUNTING



Scan for
more info

JH001
Bright
Royal

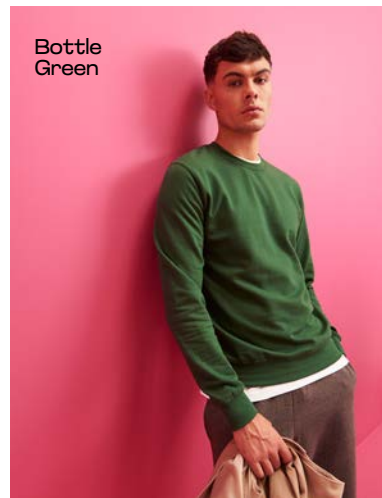
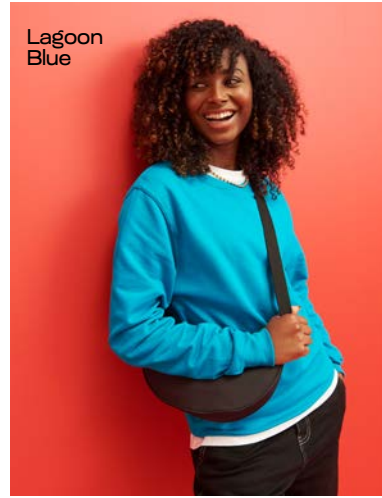


JH001
Citrus



JH001
Seafoam





| | | | | | | | | | | | | | | | | | | | | |
|----|----|----|-------|--------|----|--------|----|----|----|--------|----|----|----|----|----|-----|-----|-----|-----|-----|
| 1 | 2 | 5 | 6 NEW | 8 | 10 | 12 NEW | 13 | 14 | 15 | 16 NEW | 17 | 19 | 20 | 23 | 24 | 27 | 29 | 30 | 32 | 34 |
| 35 | 37 | 38 | 40 | 41 NEW | 42 | 44 | 45 | 49 | 51 | 53 | 55 | 56 | 57 | 58 | 59 | 62 | 66 | 67 | 68 | 69 |
| 71 | 75 | 78 | 79 | 80 | 81 | 85 | 86 | 87 | 88 | 90 | 91 | 92 | 94 | 96 | 97 | 199 | 200 | 201 | 202 | 203 |

NEW COLOURS JH030

AWDIS SWEAT

80% Ringspun Cotton / 20% Polyester*
280gsm

Mocha
Brown

Jade

Peppermint



Scan for
more info

**STYLE IS
WHAT YOU
DO WITH IT**

* Heather and charcoal fabrications may vary.
Please scan QR code for details

JH030F

WOMEN'S AWDIS SWEAT

80% Ringspun Cotton / 20% Polyester*
280gsm

1 29 86 91 97 199



Scan for
more info

New
French
Navy

Dusty
Green



* Heather and charcoal fabrications may vary.
Please scan QR code for details

JH230

ORGANIC SWEAT

80% Organic Cotton / 20% Recycled Polyester*
280gsm

1 5 24 66 67 88 91 97 199 201



Scan for
more info

Deep Black

Royal Blue

*Heather and charcoal fabrications may vary.
Please scan QR code for details

LET COMFORT STAND OUT

The original zoodie. Infuse your style with a burst of colour and a vibrant print. Crafted from a soft cotton-faced fabric, it effortlessly embodies a relaxed and casual aesthetic.

Purple

Hawaiian
Blue

JH050

ZOODIE

80% Ringspun Cotton / 20% Polyester*
280gsm

| | | | | | | | | | |
|----|----|----|----|-----|-----|-----|-----|----|----|
| 1 | 2 | 5 | 8 | 14 | 23 | 24 | 29 | 32 | 42 |
| 51 | 53 | 56 | 66 | 67 | 71 | 78 | 81 | 86 | 90 |
| 91 | 92 | 94 | 97 | 199 | 200 | 201 | 203 | | |



Scan for
more info



Digital
Lavender

Hot Pink



Storm
Grey



Digital
Lavender

Kelly
Green



Fire Red

* Heather and charcoal fabrications may vary.
Please scan QR code for details

Digital
Lavender



Heather
Grey



JH050F WOMEN'S COLLEGE ZOODIE

80% Ringspun Cotton / 20% Polyester*
280gsm

1 29 78 86 91 199



Scan for
more info

JH250

ORGANIC ZOODIE

80% Organic Cotton / 20% Recycled Polyester*
280gsm

1 67 91 97 199 201



Scan for
more info



Burgundy

JH072
Burgundy
Page 13



New
French
Navy

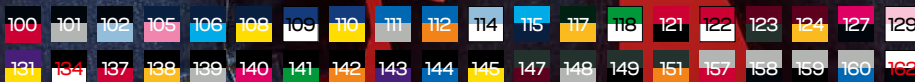
* Heather and charcoal fabrications may vary.
Please scan QR code for details

40

COLOURS

Hawaiian Blue /
Oxford Navy

Baby Pink /
Arctic
White



JH003

VARSITY HOODIE

80% Ringspun Cotton / 20% Polyester*
280gsm



Scan for
more info

Heather Grey /
French Navy



Royal Blue /
Arctic White



Oxford Navy /
Candyfloss Pink



* Heather and charcoal fabrications may vary.
Please scan QR code for details

JH009

BASEBALL HOODIE

80% Ringspun Cotton / 20% Polyester
280gsm



Scan for
more info



Heather
Grey /
Jet Black



Jet
Black

JH074

TAPERED TRACK PANT

80% Ringspun Cotton / 20% Polyester*
280gsm



Scan for
more info

* Heather and charcoal fabrications may vary.
Please scan QR code for details

JH053

VARSITY ZOODIE

80% Ringspun Cotton / 20% Polyester*
280gsm



Scan for
more info

New French Navy /
Sky Blue



JH072
New
French
Navy
Page 13

Jet Black /
Fire Red



JH080
Jet
Black
Page 48

JH063

BASEBALL ZOODIE

80% Ringspun Cotton / 20% Polyester*
280gsm



Scan for
more info

JH009
Heather Grey / Jet Black
Page 32



Burgundy / Heather Grey

Kelly Green /
White



SD004
Black
Page 82

JH043 VARSITY JACKET

70% Ringspun Cotton / 30% Polyester
330gsm



Scan for
more info



Heather
Grey /
White

Purple /
White

Hot Pink /
White

OVERSIZED AND RELAXED



Our oversized and relaxed range is designed with style and comfort in mind. From relaxed hoodies to oversized T-shirts, this collection effortlessly adapts to various occasions, providing a versatile wardrobe essential.





Deep Black



Solid Charcoal



New French Navy



Solid Charcoal

JH120 **NEW STYLE** SIGNATURE HEAVYWEIGHT HOODIE

70% Ringspun Cotton / 30% Recycled Polyester*
440gsm

- 1
- 44
- 91
- 93
- 199



Scan for more info

* Heather and charcoal fabrications may vary. Please scan QR code for details

ALWAYS BE DIFFERENT

This unisex hoodie delivers maximum style with minimal effort. Crafted from a heavyweight premium cotton-rich fabric, it boasts an oversized, boxy fit that stays true to size. Complete with a spacious pouch pocket, ribbed cuffs, and hem, this hoodie ensures warmth and comfort, making it a must-have for your everyday essentials.

Natural Stone

Heather Grey



Deep Black

Heather
Grey



CREATE YOUR OWN BRAND

NEW STYLE JH305 WOMEN'S RELAXED HOODIE

80% Ringspun Cotton / 20% Polyester*
280gsm

1 91 199



Scan for
more info

New
French
Navy



* Heather and charcoal fabrications may vary.
Please scan QR code for details



Shark Grey

Natural Stone



Dusty Lilac

JT009 *NEW COLOURS*
OVERSIZE 100 T

100% Combed Ringspun Cotton
190gsm

- 1 NEW
- 13 NEW
- 30
- 42 NEW
- 44 NEW
- 69 NEW
- 91
- 93 NEW
- 97
- 199



Scan for more info

EA006

ARROW RECYCLED HEAVY OVERSIZE T

48% Recycled Cotton / 47% Recycled Polyester / 5% Elastane
220gsm

1 91 97



Scan for more info



Navy



Arctic White

Deep Black



Arctic White



Deep Black

JT019 *NEW STYLE*
OVERSIZE 100 LONG SLEEVE T

100% Combed Ringspun Cotton
190gsm

91 97



Scan for
more info

GOOD VIBES ONLY

This loose-fitting T features a ribbed crewneck and cuffs for a relaxed design. Crafted from comfortable ringspun cotton, it is versatile enough to be worn on its own or layered throughout the year, offering both comfort and timeless style.

Arctic White





Heather Grey

Black

Navy

Heather Grey

Navy

CRATER SET



EA032 CRATER RECYCLED SWEATSHIRT

70% Recycled Cotton /
30% Recycled Polyester
280gsm

2 91 199



Scan for
more info



EA070 CRATER RECYCLED JOGPANTS

70% Recycled Cotton /
30% Recycled Polyester
280gsm

2 91 199



Scan for
more info



EA042 CRATER RECYCLED HOODIE

70% Recycled Cotton /
30% Recycled Polyester
280gsm

2 91 199



Scan for
more info

JH080

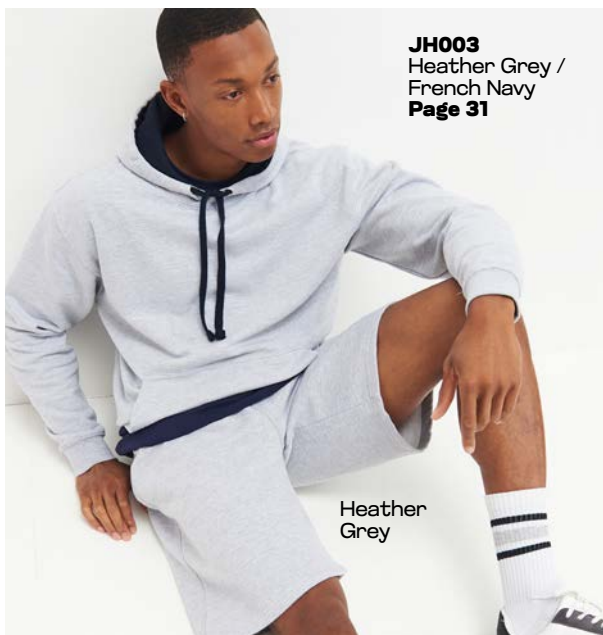
CAMPUS SHORTS

70% Ringspun Cotton / 30% Polyester*
330gsm

1 67 90 199



Scan for more info



JH003
Heather Grey /
French Navy
Page 31

Heather
Grey



JH150
New French Navy

Burgundy



Fire Red

Jet Black

JH101

GRADUATE HEAVYWEIGHT HOODIE

70% Ringspun Cotton / 30% Polyester*
330gsm

1 5 24 66 67 90 97 199 201



Scan for more info

* Heather and charcoal fabrications may vary.
Please scan QR code for details



Arctic White

JH130

GRADUATE HEAVYWEIGHT SWEAT

70% Ringspun Cotton / 30% Polyester*
330gsm

1 67 90 97 199 201



Scan for more info



New French Navy



Burgundy

Royal Blue

JH150

GRADUATE HEAVYWEIGHT ZOODIE

70% Ringspun Cotton / 30% Polyester*
330gsm

1 5 90 199 201



Scan for more info

WE ARE AWDIS



Our brand is the one stop shop for all your essentials. We cover all bases from t-shirts, hoodies, to denim. In the most perfect printable fabrics to make customisation simple with the best quality.



Charcoal

JH100 CHUNKY HOODIE

80% Ringspun Cotton / 20% Polyester*
400gsm

2 90 199 201



Scan for more info



Jet Black

JT009
Dusty Lilac
Page 42



Heather Grey

JH052 CHUNKY ZOODIE

80% Ringspun Cotton / 20% Polyester*
400gsm

1 90 199 201



Scan for more info



Jet Black

* Heather and charcoal fabrications may vary.
Please scan QR code for details

JH030
Cornflower
Blue

SD060
Black

JT009
Natural
Stone



FASHION

| | | |
|--------|--------------------------------|----|
| JH021 | Cross Neck Hoodie | 54 |
| JH020 | Street Hoodie | 55 |
| JH011 | Epic Print Hoodie | 55 |
| JH022 | Tie-Dye Hoodie | 57 |
| JT022 | Tie-Dye T | 57 |
| JH015 | Hoodie Dress | 58 |
| JH016 | Women's Cropped Hoodie | 58 |
| JH037 | Women's Cropped 1/4 Zip Sweat | 59 |
| JH065 | Women's Fashion Cropped Zoodie | 59 |
| JT016 | Women's Long Sleeve Cropped T | 60 |
| JT006 | Women's Tri-Blend Cropped T | 60 |
| JT017 | Women's Tank Top | 61 |
| JT007 | Tri-Blend Vest | 61 |
| JT034 | Camo T | 62 |
| JH014 | Camo hoodie | 62 |
| JT004 | Electric Tri-Blend T | 63 |
| JH004 | Electric Hoodie | 63 |
| JH017 | Surf Hoodie | 64 |
| JT032 | Surf T | 64 |
| EA002 | Daintree EcoViscose T | 65 |
| EA002F | Daintree EcoViscose Women's T | 65 |
| JT099 | Washed T | 65 |
| EA030 | Banff Sustainable Sweatshirt | 66 |
| EA040 | Lusaka Sustainable Hoodie | 66 |
| EA041 | Corcovado Organic Hoodie | 67 |
| EA051 | Okavango Sustainable Zoodie | 67 |



JT100
Dusty Green

JH050
Desert Sand

EA006
Black

JH001
Deep Sea
Blue

STYLE IT YOUR WAY

Explore a range of fashion-forward designs crafted for those who appreciate both modern aesthetics and a cosy feel. From trendy cuts to versatile colour palettes, our hoodies are thoughtfully curated to elevate your casual wardrobe.

NEW COLOUR JH021 CROSS NECK HOODIE

70% Ringspun Cotton / 30% Polyester*
330gsm

2 13 20 29 45 49 58 78 NEW 86 88 90 199 201 203



Scan for
more info

Dusty
Green

Digital
Lavender

JH020

STREET HOODIE

70% Ringspun Cotton / 30% Polyester*
330gsm

1 90 199 201



Scan for more info

JH011

EPIC PRINT HOODIE

80% Ringspun Cotton / 20% Polyester*
280gsm

1 67 90 97 199 201



Scan for more info



New French Navy

Heather Grey



Jet Black



Heather Grey



Arctic White

Burgundy



JH022
Blue
Cloud

JT022
Grey
Pink
Marble

JT022
Pastel
Sunset
Dip

JH022
Tie-Dye
Swirl

CREATE YOUR STYLE

JH022

TIE-DYE HOODIE

80% Ringspun Cotton / 20% Polyester*
280gsm

186 187 188 189



Scan for
more info

JT022

TIE-DYE T

100% Combed Ringspun Cotton
140gsm

186 187 188 189



Scan for
more info



JH015

HOODIE DRESS

80% Ringspun Cotton / 20% Polyester*
280gsm

90 199



Scan for
more info

JH016

WOMEN'S CROPPED HOODIE

80% Ringspun Cotton / 20% Polyester*
280gsm

86 90 97 199



Scan for
more info



JH037

WOMEN'S CROPPED 1/4 ZIP SWEAT

80% Ringspun Cotton / 20% Polyester
280gsm



Scan for more info

13 75 85 91 97

JH065

WOMEN'S FASHION CROPPED ZOODIE

80% Ringspun Cotton / 20% Polyester*
280gsm



Scan for more info

29 86 91 97 199

JH065
Dusty Green

JH037
Deep Black



JH072
Arctic White
Page 13

JT016

WOMEN'S LONG SLEEVE CROPPED T

50% Polyester / 25% Viscose / 25% Cotton*
160gsm

86 97 195



Scan for more info

Arctic White



JT006

WOMEN'S TRI-BLEND CROPPED T

50% Polyester / 25% Viscose / 25% Cotton*
160gsm

91 97 195 199



Scan for more info

Heather Grey



* Heather black and charcoal fabrications may vary. Please scan QR code for details

JT017

WOMEN'S TANK TOP

50% Polyester / 25% Viscose / 25% Cotton*
160gsm

86 97 195



Scan for
more info

Arctic
White



JT007

TRI-BLEND VEST

50% Polyester / 25% Viscose / 25% Cotton*
160gsm

91 97 195 199



Scan for
more info

Heather
Black



JT034

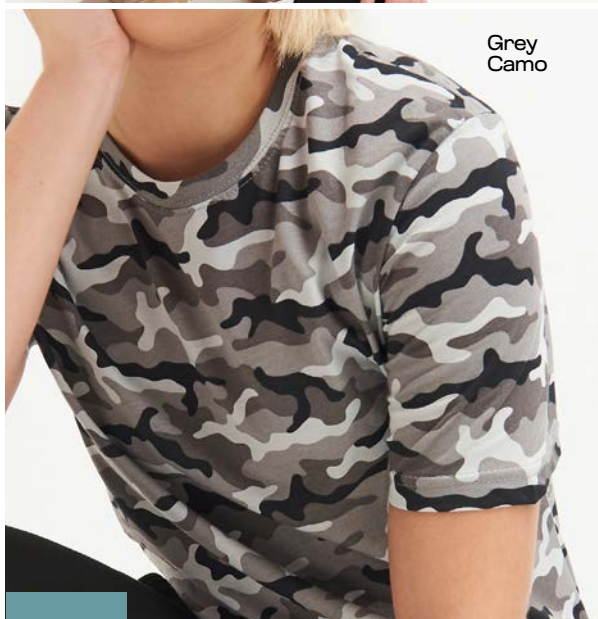
CAMO T

100% Cotton
160gsm

184 185



Scan for
more info



Green
Camo



JH014

CAMO HOODIE

70% Ringspun Cotton / 30% Polyester
280gsm

183 184 185



Scan for
more info



Electric Yellow

JH004 ELECTRIC HOODIE

85% Polyester / 15% Ringspun Cotton
280gsm

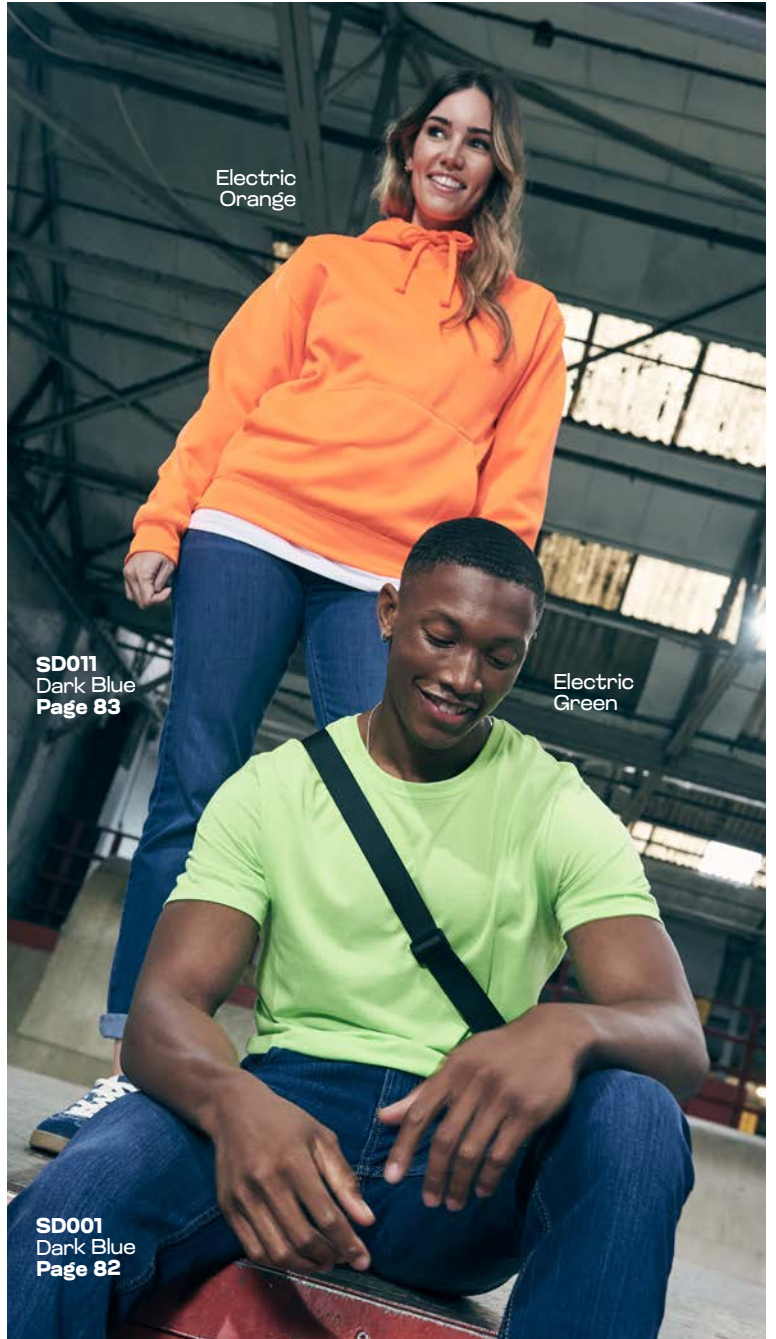
165 166 167 168



Scan for more info



Electric Pink



Electric Orange

SD011
Dark Blue
Page 83

Electric Green

SD001
Dark Blue
Page 82

JT004 ELECTRIC TRI-BLEND T

50% Polyester / 25% Viscose / 25% Cotton
160gsm

165 166 167 168



Scan for more info



Surf Pink

JH017

SURF HOODIE

80% Ringspun Cotton / 20% Polyester
280gsm

190 191 192 193 194



Scan for
more info

JT032

SURF T

99% Cotton / 1% Polyester
160gsm

190 191 192 193 194



Scan for
more info

Surf Ocean

EA002

DAINTREE ECOVISCOSE T

70% LENZING™ ECOVERO™ /
30% Organic Cotton
160gsm

2 31 70 86 90 97



Scan for more info



Navy



Fern Green



EA002F

DAINTREE ECOVISCOSE WOMEN'S T

70% LENZING™ ECOVERO™ /
30% Organic Cotton
160gsm

2 31 70 86 90 97



Scan for more info



Washed
Jet Black

JT099

WASHED T

55% Ringspun Cotton /
45% Polyester
165gsm

206 207



Scan for more info



EA030
Heather
Grey



EA030

BANFF SUSTAINABLE SWEATSHIRT

70% Recycled Cotton / 30% Recycled Polyester
260gsm

91 199



Scan for
more info

EA030
Black



EA040
Sand Dune



EA040
Sand Dune



EA040

LUSAKA SUSTAINABLE HOODIE

70% Recycled Cotton / 30% Recycled Polyester
260gsm

2 43 46 91 199



Scan for
more info

EA051

OKAVANGO SUSTAINABLE ZOODIE

70% Recycled Cotton / 30% Recycled Polyester
330gsm

98 133 158



Scan for
more info

EA051
Black / Charcoal

EA041

CORCOVADO ORGANIC HOODIE

100% Organic Cotton*
270gsm

2 90 199



Scan for
more info

EA041
Heather
Grey

JC287
Jet Black
Page 123



JT001F
Solid Black

JT001
Heather
Burgundy



EA021
Jet Black



JP002F
White

JP002
Navy



EA061
Navy

EA060
Heather

SD025
Black

SD020
Stone

CASUAL

| | | |
|--------|------------------------------------|----|
| JH147 | Campus Full Zip Sweat | 70 |
| JH046 | Sophomore 1/4 Zip Sweat | 71 |
| JT001 | Tri-Blend T | 72 |
| JT001F | Women's Tri-Blend T | 72 |
| JT002 | Long Sleeve Tri-Blend T | 73 |
| JT002F | Long Sleeve Women's Tri-Blend T | 73 |
| EA021 | Erawan Organic Long Sleeve T | 73 |
| JP100 | The 100 Polo | 74 |
| JP100F | The 100 Women's Polo | 75 |
| EA011 | Etosha Organic Polo Shirt | 75 |
| JP003 | Stretch Tipped Polo | 76 |
| JP103 | Long Sleeve Tipped 100 Polo | 77 |
| JP001 | Tri-Blend Polo | 78 |
| JP002 | Stretch Polo | 79 |
| SD020 | Adam Slim Chinos | 80 |
| SD025 | Lily Skinny Chinos | 80 |
| EA061 | Wakhan 1/4 Zip Sustainable Sweater | 81 |
| EA060 | Arenal Sustainable Sweater | 81 |
| EA062 | Taroko Sustainable Sweater | 81 |
| EA080 | Iguazu Sustainable Knitted Hoodie | 81 |
| SD001 | Leo Straight Jeans | 82 |
| SD004 | Max Slim Jeans | 82 |
| SD011 | Katy Straight Jeans | 83 |
| SD014 | Lara Skinny Jeans | 83 |
| SD065 | Olivia Denim Jacket | 84 |
| SD060 | Noah Denim Jacket | 84 |
| SD040 | Jack Denim Shirt | 85 |
| SD045 | Lucy Denim Shirt | 85 |

SD065
Dark Blue

SD060
Black

JT009
Natural Stone

JT017
Dusty Pink

SD011
Dark Blue

SD001
Black

JH147

CAMPUS FULL ZIP SWEAT

70% Ringspun Cotton / 30% Polyester*
330gsm

1 91 199 201



Scan for
more info

Deep Black



SD001
Black
Page 82

Heather
Grey



JH072
Heather Grey
Page 13

JH046

SOPHOMORE

1/4 ZIP SWEAT

80% Ringspun Cotton / 20% Polyester*
280gsm

1 67 90 199 201



Scan for
more info

Burgundy

New
French
Navy

JC287
Jet Black
Page 123

JT001

TRI-BLEND T

50% Polyester / 25% Viscose / 25% Cotton*
160gsm

Burgundy

1 91 97 195 196 197 198 199



Scan for more info

Deep Black



JT001F

WOMEN'S TRI-BLEND T

50% Polyester / 25% Viscose / 25% Cotton*
160gsm

91 97 195



Scan for more info

* Heather black and charcoal fabrications may vary.
Please scan QR code for details

JT002

LONG SLEEVE TRI-BLEND T

50% Polyester / 25% Viscose / 25% Cotton
160gsm

91 97 197 199



Scan for more info



Heather Grey



Heather Charcoal



JT002F

LONG SLEEVE WOMEN'S TRI-BLEND T

50% Polyester / 25% Viscose / 25% Cotton
160gsm

91 97 198 199



Scan for more info

Arctic White



EA021

ERAWAN ORGANIC LONG SLEEVE T

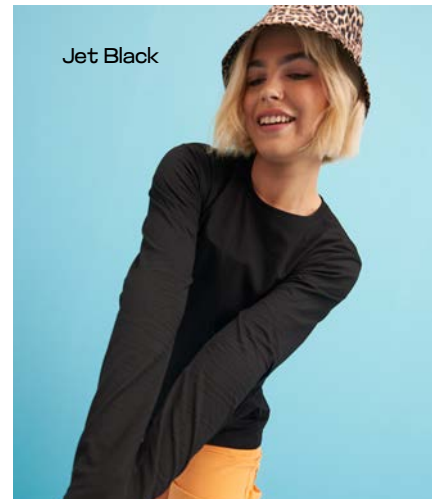
100% Organic Cotton
150gsm

90 97



Scan for more info

Jet Black



JP100

THE 100 POLO

100% Combed Ringspun Cotton*
180gsm

| | | | | |
|----|-----|-----|----|----|
| 2 | 4 | 5 | 8 | 13 |
| 30 | 53 | 66 | 67 | 91 |
| 97 | 199 | 201 | | |



Scan for more info

Ink Blue

Fire Red

Arctic White

SD060
Black
Page 84

**STYLE
SIMPLICITY**

* Heather grey fabrications may vary.
Please scan QR code for details



JP100F
Oxford Navy

EA011

ETOSHA ORGANIC POLO SHIRT

100% Organic Cotton
170gsm

2 90 97



Scan for
more info



JP100F
Oxford Navy



EA011
Navy

JP100F

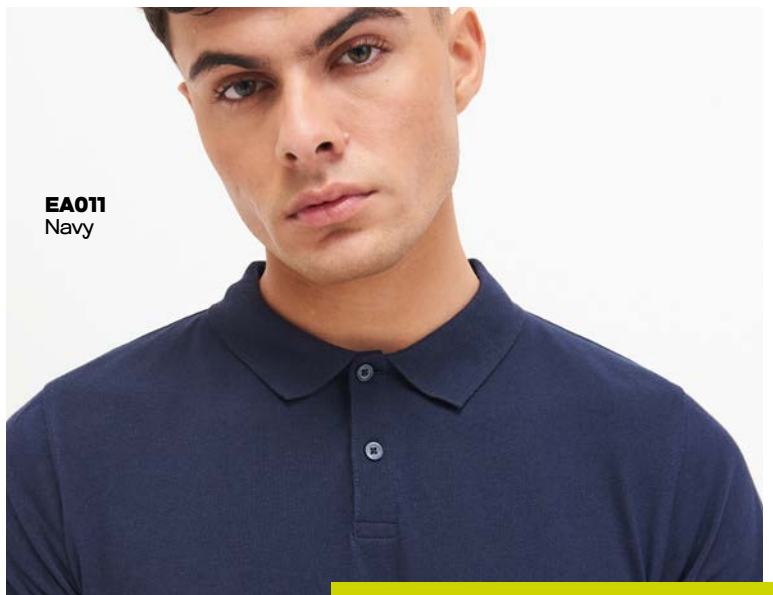
THE 100 WOMEN'S POLO

100% Combed Ringspun Cotton
180gsm

2 91



Scan for
more info



EA011
Navy

Deep Black /
Arctic White



Fire Red /
Arctic White



JP003 STRETCH TIPPED POLO

97% Cotton / 3% Elastane
200gsm



Scan for
more info

JP103

LONG SLEEVE TIPPED 100 POLO

100% Combed Ringspun Cotton
180gsm

165 120 134



Scan for
more info

Oxford Navy /
Arctic White



Deep Black /
Arctic White



JP001

TRI-BLEND POLO

50% Polyester /
25% Viscose /
25% Cotton*
200gsm

91 195 197



Scan for
more info

Heather
Charcoal



SD001
Deep Black
Page 82

Deep Black



SD020
Stone
Page 80

* Heather black and charcoal fabrications may vary.
Please scan QR code for details

JP002

STRETCH POLO

97% Cotton / 3% Elastane
200gsm



Scan for
more info

1 91 97



White

Navy

EA061
Navy

EA060
Heather Grey

Stone

Black

SD020
ADAM SLIM
CHINOS

98% Cotton / 2% Elastane
290gsm

2 91 210 211



Scan for
more info

SD025
LILY SKINNY
CHINOS

98% Cotton / 2% Elastane
290gsm

2 91 210 211



Scan for
more info

EA061

WAKHAN 1/4 ZIP SUSTAINABLE SWEATER

70% Recycled Cotton /
30% Recycled Polyester
12lbs/doz, 7 gauge

2 91 199 201



Scan for
more info



Charcoal



Heather Grey



Black

EA060

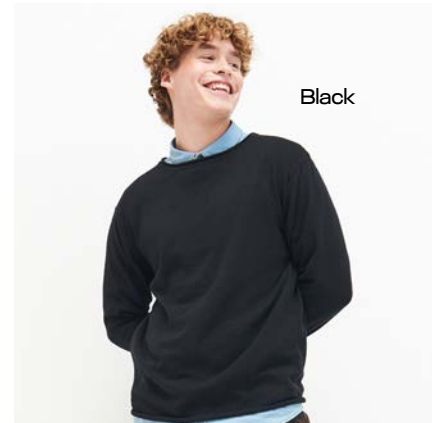
ARENAL SUSTAINABLE SWEATER

70% Recycled Cotton /
30% Recycled Polyester
8lbs/doz, 12 gauge

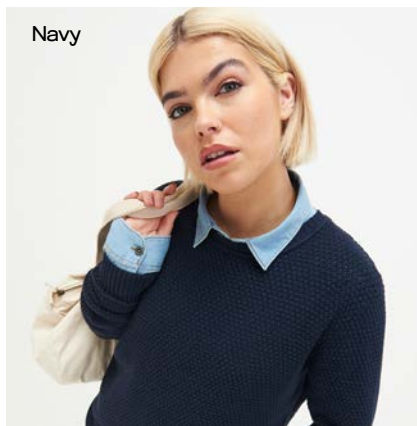
2 91 199 201



Scan for
more info



Black



Navy



Navy

EA062

TAROKO SUSTAINABLE SWEATER

70% Recycled Cotton /
30% Recycled Polyester
15.5lbs/doz, 7 gauge

2 91



Scan for
more info



Navy /
Heather Grey

EA080

IGUAZU SUSTAINABLE KNITTED HOODIE

70% Recycled Cotton /
30% Recycled Polyester
12lbs/doz, 7 gauge

149 156 180



Scan for
more info



Navy /
Heather Grey

SD004

MAX SLIM JEANS

99% Cotton / 1% Elastane

73% Cotton / 25% Polyester / 2% Elastane (Black)

10.5oz / 11oz (Black)

91 208

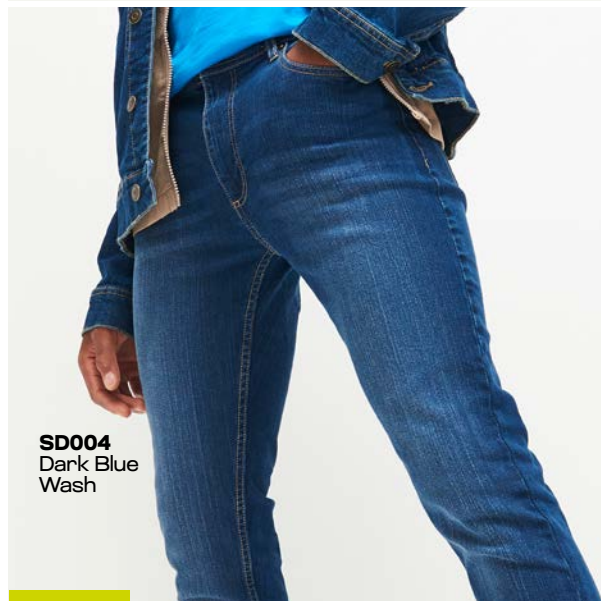


Scan for
more info



JH043
Kelly Green /
White
Page 34

SD004
Black



SD004
Dark Blue
Wash



JH050
Bottle Green
Page 27

JT009
Desert Sand
Page 42

SD001
Dark Blue
Wash

SD001
Black

SD001

LEO STRAIGHT JEANS

99% Cotton / 1% Elastane

73% Cotton / 25% Polyester / 2% Elastane (Black)

10.5oz / 11oz (Black)

91 208



Scan for
more info



JT100F
Baby Pink
Page 19

SD011
Dark Blue
Wash



SD045
Dark Blue
Page 85

SD011
Black

SD014 LARA SKINNY JEANS

98% Cotton / 2% Elastane
77% Cotton / 21% Polyester / 2% Elastane (Black)
9oz

91 208



Scan for
more info



JH030F
Dusty Green
Page 24

JH043
Oxford Navy /
White
Page 34

SD014
Black

SD014
Dark Blue
Wash

SD011 KATY STRAIGHT JEANS

98% Cotton / 2% Elastane
77% Cotton / 21% Polyester / 2% Elastane (Black)
9oz

91 208



Scan for
more info

SD065

OLIVIA DENIM JACKET

99% Cotton / 1% Elastane
73% Cotton / 25% Polyester / 2% Elastane (Black)
10.5oz / 11oz (Black)

91 208 209



Scan for more info

Dark Blue wash

JT017
Dusty Pink
Page 61

SD011
Dark Blue wash
Page 83

SD060

NOAH DENIM JACKET

99% Cotton / 1% Elastane
73% Cotton / 25% Polyester / 2% Elastane (Black)
10.5oz / 11oz (Black)

91 208 209



Scan for more info

Black

JT009
Natural Stone
Page 42

SD001
Black
Page 82





Light Blue

Black



Light Blue

Dark Blue

SD011
Dark Blue
Wash
Page 83

SD040
JACK DENIM SHIRT

100% Cotton
5.44oz



Scan for
more info

91 208 209

SD045
LUCY DENIM SHIRT

100% Cotton
5.44oz



Scan for
more info

91 208 209



JC005
Purple

JC001
Orange Crush

JC001
Digital
Lavender

JC287
Digital
Lavender

JC005
Electric
Orange

JC287
Jet Black

JC080
Arctic
White

SPORTSWEAR

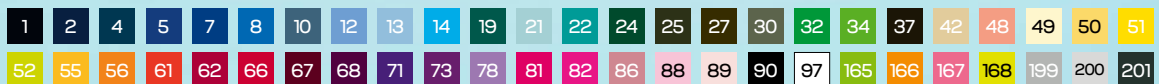
| | | |
|-------|----------------------------------|-----|
| JC001 | Cool T | 89 |
| JC080 | Cool Shorts | 89 |
| JC005 | Women's Cool T | 90 |
| JC070 | Women's Cool Workout Legging | 90 |
| JC086 | Women's Cool Capri | 91 |
| JC087 | Women's Cool Athletic Pant | 91 |
| JC201 | Recycled Cool T | 92 |
| JC205 | Women's Recycled Cool T | 92 |
| JC020 | Cool Smooth T | 94 |
| JC025 | Women's Cool Smooth T | 94 |
| JC027 | Women's Cool Smooth Workout Vest | 95 |
| JC017 | Women's Cool Sports Crop Top | 95 |
| JH006 | Sports Polyester Hoodie | 96 |
| JH066 | Sports Polyester Zoodie | 97 |
| JC012 | Women's Long Sleeve Cool T | 99 |
| JC002 | Long Sleeve Cool T | 99 |
| JC007 | Cool Vest | 101 |
| JC009 | Cool Muscle Vest | 101 |
| JC022 | Cool Smooth Sports Vest | 101 |
| JC015 | Women's Cool Vest | 103 |
| JC003 | Contrast Cool T | 104 |
| JC043 | Contrast Cool Polo | 105 |
| JC031 | Men's Cool 1/2 Zip Sweat | 106 |
| JC036 | Women's Cool 1/2 Zip Sweat | 107 |
| JC040 | Cool Polo | 109 |
| JC021 | Cool Smooth Polo | 109 |
| JC045 | Women's Cool Polo | 109 |

50 COLOURS

Cornflower
Blue

Orange
Flame

JC092
Jet Black
Page 129





Hyper Pink

Arctic White



JC040
Sky Blue
Page 109

Royal Blue



Hyper Pink

Jet Black

JC001 COOL T

100% Polyester
140gsm



Scan for
more info

JC080 **NEW SIZES** COOL SHORTS

100% Polyester
140gsm

1 5 66 90 97 201



Scan for
more info



Digital
Lavender

Jet Black

JC005 WOMEN'S COOL T

100% Polyester
140gsm

| | | | | | | | | |
|----|----|-----|-----|-----|-----|-----|-----|----|
| 1 | 2 | 5 | 8 | 13 | 19 | 21 | 24 | 32 |
| 51 | 66 | 67 | 71 | 73 | 78 | 81 | 82 | 89 |
| 90 | 97 | 165 | 166 | 167 | 168 | 199 | 201 | |



Scan for
more info

JC070 WOMEN'S COOL WORKOUT LEGGING

86% Polyester / 14% Elastane
280gsm

90



Scan for
more info

JC045
Royal Blue
Page 109

Jet Black



JH065
Arctic White
Page 59

JC015
Electric Pink
Page 103



JC086

WOMEN'S COOL CAPRI

87% Polyester / 13% Elastane
280gsm

90



Scan for
more info

JC087

WOMEN'S COOL ATHLETIC PANT

87% Polyester / 13% Elastane
280gsm

1 90



Scan for
more info

JC201

RECYCLED COOL T

100% Recycled Polyester
140gsm

| | | | | |
|----|----|----|-----|-----|
| 1 | 5 | 8 | 51 | 66 |
| 71 | 90 | 97 | 165 | 201 |



Scan for
more info

JC205

WOMEN'S RECYCLED COOL T

100% Recycled Polyester
140gsm

| | | | | |
|----|----|----|-----|-----|
| 1 | 5 | 8 | 51 | 66 |
| 71 | 90 | 97 | 165 | 201 |



Scan for
more info

Royal Blue



JC080
Royal Blue
Page 89

Arctic White

Sapphire Blue

Fire Red

Purple



JC080
French Navy
Page 89

JC288
Jet Black
Page 124

JC287
Jet Black
Page 123

JC281
Jet Black
Page 119

JC020

COOL SMOOTH T

100% Polyester
135gsm

| | | | | | | | |
|----|----|----|----|-----|-----|-----|-----|
| 1 | 5 | 8 | 22 | 24 | 51 | 56 | 66 |
| 71 | 78 | 90 | 97 | 165 | 166 | 168 | 201 |



Scan for more info



Sapphire Blue

JC080
Royal Blue
Page 89

French Navy

JC086
Jet Black
Page 91

JC025

WOMEN'S COOL SMOOTH T

100% Polyester
135gsm

| | | |
|---|----|----|
| 1 | 90 | 97 |
|---|----|----|



Scan for more info



Arctic White /
Jet Black



JC027

WOMEN'S COOL SMOOTH WORKOUT VEST

100% Polyester
135gsm

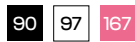


Scan for
more info

JC017

WOMEN'S COOL SPORTS CROP TOP

90% Nylon / 10% Elastane
250gsm



Scan for
more info

Jet Black



Steel Grey

Arctic
White

JH006 SPORTS POLYESTER HOODIE

100% Polyester
200gsm

| | | | | |
|----|----|-----|-----|----|
| 2 | 5 | 66 | 67 | 90 |
| 94 | 97 | 173 | 175 | |



Scan for
more info

TAKE SPORTS TO THE STREET



Scan for more info

JH066

SPORTS POLYESTER ZOODIE

100% Polyester
200gsm

103 121 134 137 153

Fire Red /
Jet Black

Steel Grey /
Jet Black

JC080
Fire Red
Page 89

Arctic
White

Sapphire
Blue

Purple

JC287
Jet Black
Page 123

JC082
Jet Black
Page 133

JC092
Arctic White
Page 129

THERE ARE NO RULES

Give all to your training inside and out and push towards your goals.

JC002 **NEW COLOURS** LONG SLEEVE COOL T

100% Polyester
140gsm



Scan for more info

JC012 WOMEN'S LONG SLEEVE COOL T

100% Polyester
140gsm



Scan for more info



MOVE WITH STYLE

JC007
Kelly Green

JC072
Jet Black
Page 133



Bottle Green

JC080
Charcoal
Page 89



Jet Black

JC080
Royal Blue
Page 89

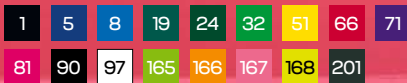


Arctic White

JC072
Sports Grey
Page 133

JC007 COOL VEST

100% Polyester
140gsm



Scan for more info

JC009 COOL MUSCLE VEST

100% Polyester
140gsm



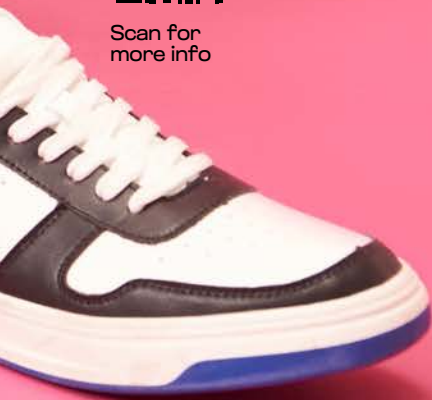
Scan for more info

JC022 COOL SMOOTH SPORTS VEST

100% Polyester
135gsm



Scan for more info



Electric
Green

Royal Blue

PERFORMANCE GUARANTEED

JC287
Jet Black
Page 123

JC288
Black
Page 124



Sapphire Blue

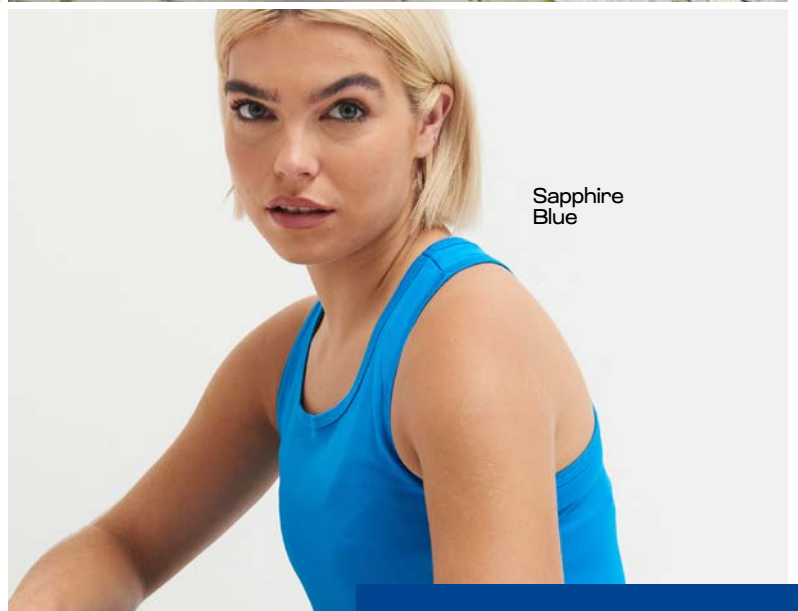


Arctic White

JC287
Digital
Lavender
Page 123



Electric Pink



Sapphire Blue

JC015 WOMEN'S COOL VEST

100% Polyester
140gsm

| | | | | | | |
|----|-----|-----|-----|-----|-----|----|
| 1 | 5 | 8 | 66 | 71 | 81 | 90 |
| 97 | 165 | 166 | 167 | 168 | 201 | |

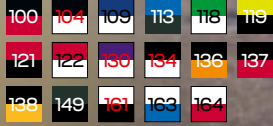


Scan for more info

JC003

CONTRAST COOL T

100% Polyester
140gsm



Scan for
more info

French Navy /
Fire Red

Jet Black /
Electric
Orange

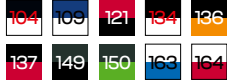
JC080
Arctic
White
Page 89

JC080
Fire Red
Page 89

JC043

CONTRAST COOL POLO

100% Polyester
140gsm



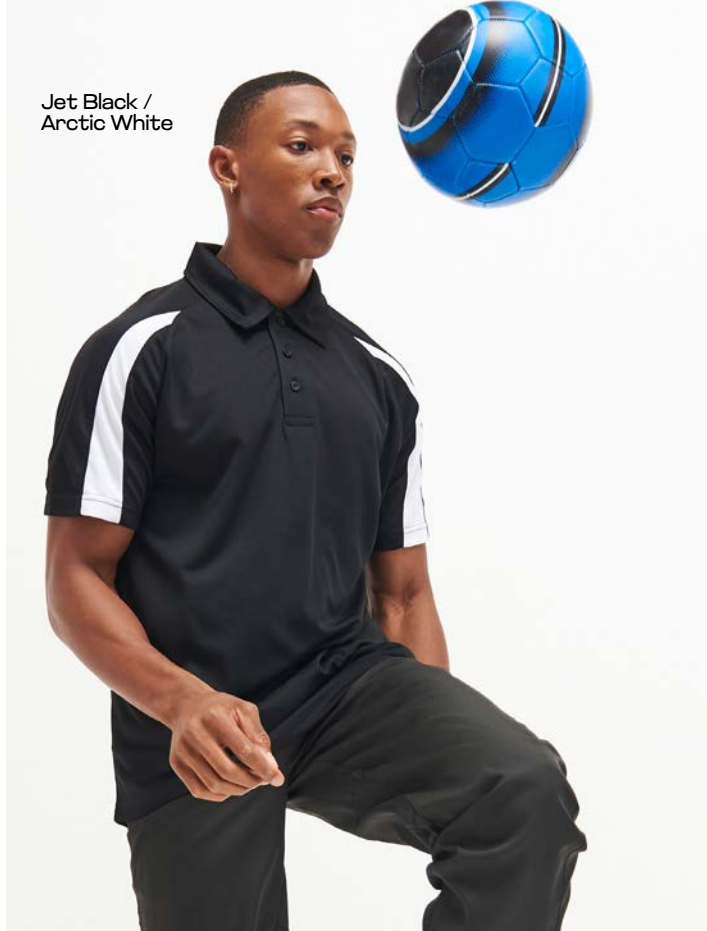
Scan for
more info



Arctic
White /
Sapphire
Blue



Charcoal /
Jet Black



Jet Black /
Arctic White



Charcoal /
Jet Black

JC088
Jet Black
Page 125

JC031

MEN'S COOL 1/2 ZIP SWEAT

87% Polyester / 13% Elastane
280gsm

104 109 134 137 149



Scan for
more info

French Navy /
Arctic White



JC072
Jet Black
Page 133

Jet Black /
Fire Red



JC080
Fire Red
Page 89

JC036

WOMEN'S COOL 1/2 ZIP SWEAT

87% Polyester / 13% Elastane
280gsm

104 134 137 149



Scan for
more info

Charcoal /
Jet Black

JC088
Jet Black
Page 125

CHOOSE YOUR STRIVE

Smarten up your sports kit with our 100% polyester Polo's. Experience the unbeatable combination of top-tier performance fabric that not only elevates your game but also ensures a sharp and polished appearance.

Bottle
Green

JC281
Jet Black
Page 119

Burgundy

JC281
French Navy
Page 119



Sky Blue

JC080
Royal Blue
Page 89



Sapphire Blue

JC080
Arctic White
Page 89



Royal Blue

JC086
Jet Black
Page 91

JC040
COOL POLO

100% Polyester
140gsm

| | | | | | | | | |
|----|----|----|----|----|----|----|-----|-----|
| 1 | 5 | 8 | 13 | 22 | 24 | 32 | 34 | 51 |
| 56 | 66 | 67 | 71 | 81 | 90 | 97 | 199 | 201 |



Scan for more info

JC021
COOL SMOOTH POLO

100% Polyester
135gsm

| | | | | |
|----|----|----|-----|----|
| 1 | 5 | 8 | 51 | 66 |
| 71 | 90 | 97 | 201 | |



Scan for more info

JC045
WOMEN'S COOL POLO

100% Polyester
140gsm

| | | | |
|----|----|----|----|
| 1 | 5 | 8 | 51 |
| 66 | 71 | 90 | 97 |

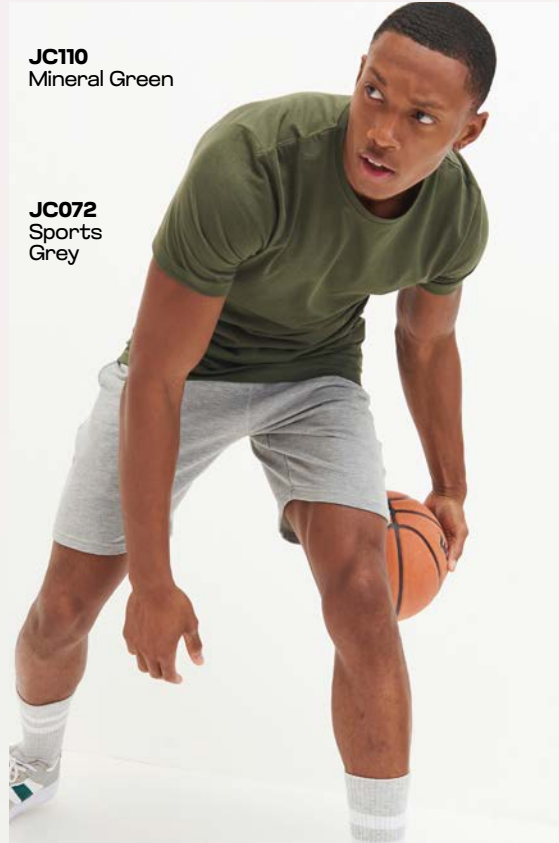


Scan for more info



JC058
Grey /
Grey Melange

JC086
Jet Black



JC110
Mineral Green

JC072
Sports
Grey



JC023
Charcoal

JC023
Royal Blue



JC037
Jet Black

JC080
Charcoal



PERFORMANCE



JC013
Black

JC217
Digital
Lavender

JC287
Digital
Lavender

| | | |
|--------|----------------------------------|-----|
| JC041 | Supercool Performance Polo | 112 |
| JC011 | Supercool Performance T | 112 |
| EA004 | Ambaro Recycled Sports T | 113 |
| EA004F | Ambaro Recycled Women's Sports T | 113 |
| JC004 | Cool Urban T | 114 |
| JC110 | Cool Urban Fitness T | 115 |
| JC023 | Long Sleeve Active T | 116 |
| JC232 | Active Recycled Baselayer | 117 |
| JC281 | Active Trackpants | 119 |
| JC013 | Women's Open Back T | 121 |
| JC217 | Women's Recycled Tech Sports Bra | 123 |
| JC287 | Women's Recycled Tech Leggings | 123 |
| JC288 | Women's Recycled Tech Shorts | 124 |
| JC074 | Women's Cool Jog Short | 125 |
| JC088 | Women's Cool Training Shorts | 125 |
| JC030 | Cool Flex 1/4 Zip Top | 127 |
| JC035 | Women's Cool Flex 1/4 Zip Top | 127 |
| JC092 | Cool Sliders | 129 |
| JC037 | Mens Cool Cowl Neck Top | 130 |
| JC038 | Womens Cool Cowl Neck Top | 130 |
| JC057 | Men's Cool Contrast Zoodie | 131 |
| JC058 | Women's Cool Contrast Zoodie | 131 |
| JC052 | Cool Fitness Hoodie | 132 |
| JC053 | Urban Sleeveless Muscle Hoodie | 132 |
| JC072 | Men's Cool Jog Short | 133 |
| JC082 | Mens Cool Tapered Jogpant | 133 |

JC041

SUPERCOOL PERFORMANCE POLO

100% Polyester
170gsm



Scan for
more info

JC011

SUPERCOOL PERFORMANCE T

100% Polyester
170gsm



Scan for
more info

1 66 90 97

1 90

JC041
Arctic
White

JC011
French
Navy

JC080
French
Navy
Page 89

JC072
French
Navy
Page 133

Fire Red



EA070
Black
Page 47

Royal Blue



EA070
Black
Page 47

EA004

AMBARO RECYCLED SPORTS T

100% Recycled Polyester
140gsm

1 5 66 90 97



Scan for more info

EA004F

AMBARO RECYCLED WOMEN'S SPORTS T

100% Recycled Polyester
140gsm

1 5 66 90 97



Scan for more info

JC004

COOL URBAN T

100% Polyester
155gsm

169 170 171



Scan for
more info

Black Urban
Marl

Navy Urban
Marl

JC070
Jet Black
Page 90

JC080
Jet Black
Page 89

Mineral
Green



JC110
COOL URBAN FITNESS T

60% Cotton / 40% Polyester
160gsm

2 26 90 95 97



Scan for
more info

JC023

LONG SLEEVE ACTIVE T

100% Recycled Polyester
135gsm

1 5 90 168 201



Scan for
more info

Charcoal

Royal Blue

JC232 **NEW STYLE** ACTIVE RECYCLED BASELAYER

91% Recycled Polyester / 9% Elastane
160gsm

1 90 97



Scan for
more info

Jet Black

French
Navy

JC281
Jet Black
Page 119

JC080
Royal Blue
Page 89

JT009
Sky Blue
Page 42

Jet Black

French
Navy



FASHION IS PERSONAL

Crafted from a lightweight, quick-dry fabric, these Active track pants boast an ergonomic fit that prioritizes comfort.

Offering a versatile unisex design, they are the perfect fit for all your sporting activities.

NEW STYLE **JC281** ACTIVE TRACKPANTS

60% Polyester / 40% Recycled Polyester
110gsm

1 90



Scan for more info



JC043
Jet Black /
Arctic White
Page 105

Jet Black

PERFORM

Our gym sets are the perfect outfit that can take you from school run, to lunch to the gym. The fashionable style and great colour options means you will always look your best while getting in shape.



INSPIRE

PUSH

JC013

WOMEN'S OPEN BACK T

100% Polyester
140gsm

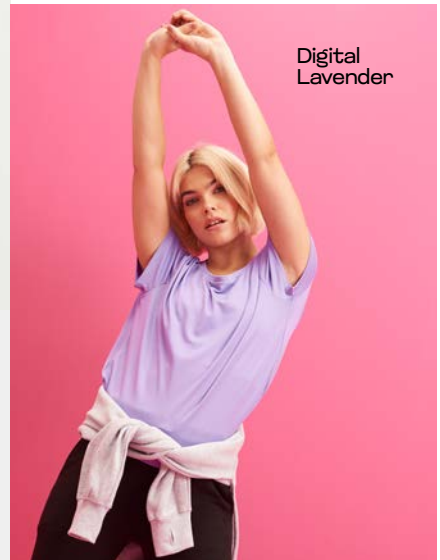
21 78 90 97



Scan for more info



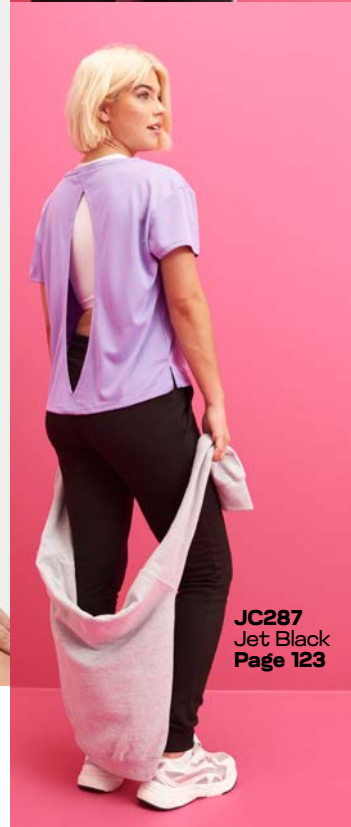
JC074
Jet Black
Page 125



Digital
Lavender



Arctic
White



JC287
Jet Black
Page 123

CONTROL YOUR OWN WINS

Digital
Lavender



JC217

WOMEN'S RECYCLED TECH SPORTS BRA

80% Recycled Polyester / 20% Elastane
240gsm

78 90



Scan for
more info

JC287

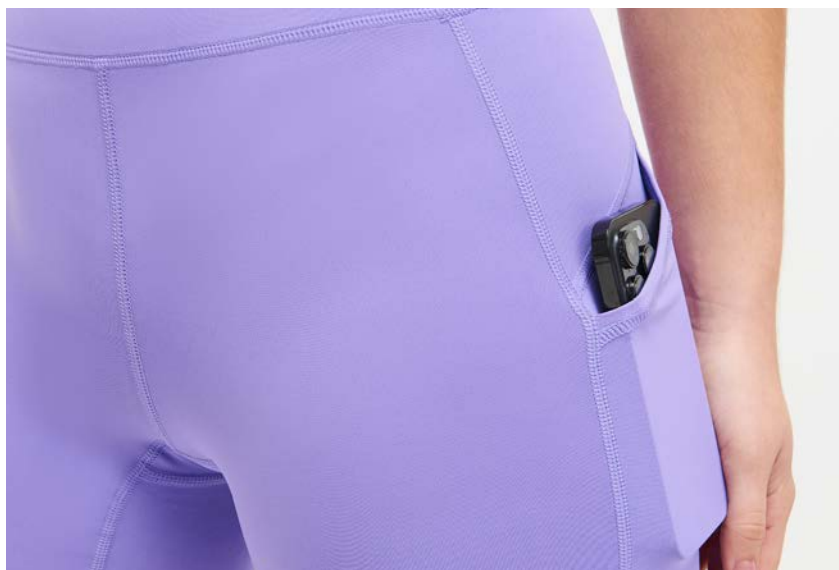
WOMEN'S RECYCLED TECH LEGGINGS

80% Recycled Polyester / 20% Elastane
240gsm

78 90



Scan for
more info



FIND YOUR FIRE

Experience optimal comfort without sacrificing movement. Fashion-forward design adding a touch of sophistication to your active wardrobe.

JC288
Jet Black

JC027
Arctic White / Jet Black
Page 95



NEW STYLE **JC288**

WOMEN'S RECYCLED TECH SHORTS

80% Recycled Polyester / 20% Elastane
240gsm

90



Scan for
more info

JC074

WOMEN'S COOL JOG SHORT

60% Polyester / 35% Cotton / 5% Elastane
240gsm

90



Scan for
more info



JC013
Arctic White
Page 121

JC074
Jet Black



JC027
Arctic White /
Jet Black

JC288
Jet Black

JC088

WOMEN'S COOL TRAINING SHORTS

87% Polyester / 13% Elastane
280gsm

90



Scan for
more info



JC043
Charcoal /
Jet Black
Page 105

JC088
Jet Black



JC036
Charcoal /
Jet Black
Page 107

JC088
Jet Black

French
Navy

Jet Black

JC080
White
Page 89

JC080
Black
Page 89

JC030

COOL FLEX 1/4 ZIP TOP

86% Polyester / 14% Elastane
280gsm

1 90 181



Scan for
more info

JC035

WOMEN'S COOL FLEX 1/4 ZIP TOP

86% Polyester / 14% Elastane
280gsm

1 90 181



Scan for
more info



French Navy



Jet Black

JH305
Deep Black
Page 41

JC088
Jet Black
Page 125

Jet Black

CHOOSE YOUR STYLE

The latest in seasonal fashion, these sliders showcase a soft, synthetic upper with a convenient single footstrap, allowing for easy wear and customisable rebranding. Designed with a moulded footbed and an impact-absorbing outsole, these sliders prioritise comfort without compromising on style.

NEW STYLE **JC092** COOL SLIDERS

EVA Injection Sole
100% Polyester Upper

90 97



Scan for
more info



Arctic White

JC037

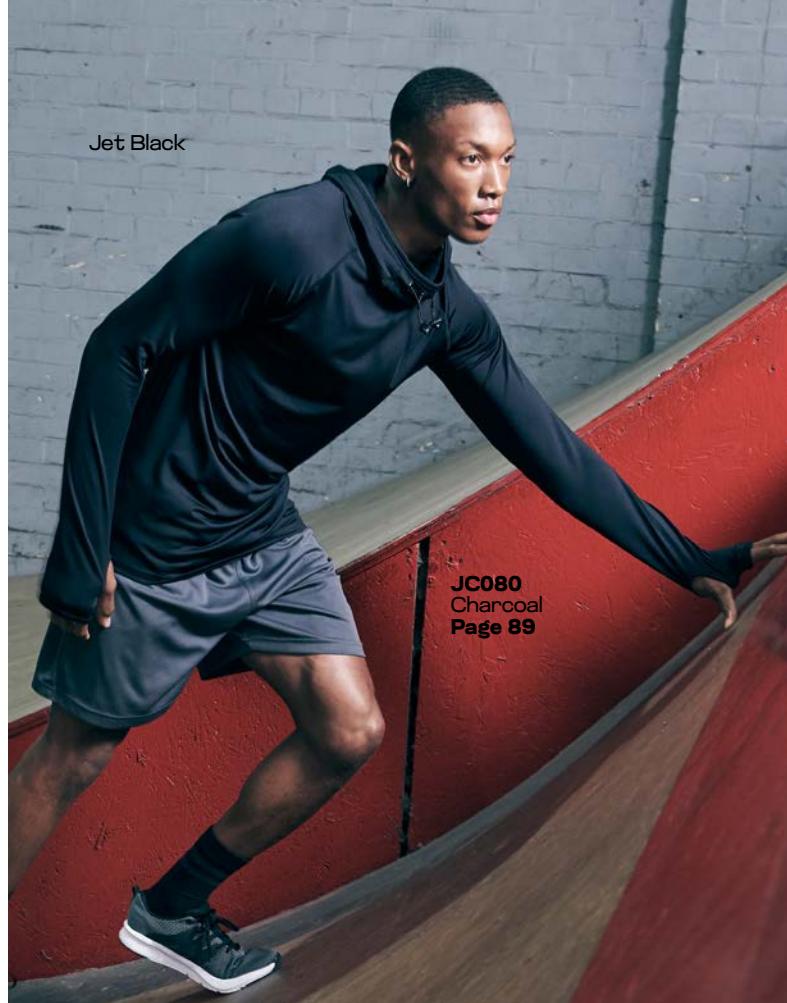
MEN'S COOL COWL NECK TOP

92% Polyester / 8% Elastane*
210gsm

90 172 175 176



Scan for
more info



Jet Black

JC080
Charcoal
Page 89



Jet Black

JC287
Digital
Lavender
Page 123

130

JC038

WOMEN'S COOL COWL NECK TOP

92% Polyester / 8% Elastane*
210gsm

90 172 174 175 177 178



Scan for
more info

* Jet Black weight and fabrications may vary.
Please scan QR code for details

JC057

MEN'S COOL CONTRAST ZOODIE

92% Polyester / 8% Elastane (Contrast)

89% Polyester / 11% Elastane (Body)

210gsm (Sleeves)

240gsm (Body)

90 99 154 132



Scan for
more info

JC001
Arctic
White
Page 89

Jet Black



JC058

WOMEN'S COOL CONTRAST ZOODIE

92% Polyester / 8% Elastane (Contrast)

89% Polyester / 11% Elastane (Body)

210gsm (Sleeves)

240gsm (Body)

90 116 132 154



Scan for
more info

Grey /
Grey Melange



TRAIN IN STYLE

JC052
Sports Grey

JC052 COOL FITNESS HOODIE

60% Polyester / 35% Cotton / 5% Elastane
240gsm

1 90 182



Scan for
more info

JC072
Sports Grey

JC053 URBAN SLEEVELESS MUSCLE HOODIE

60% Polyester / 35% Cotton / 5% Elastane
240gsm

90 182



Scan for
more info

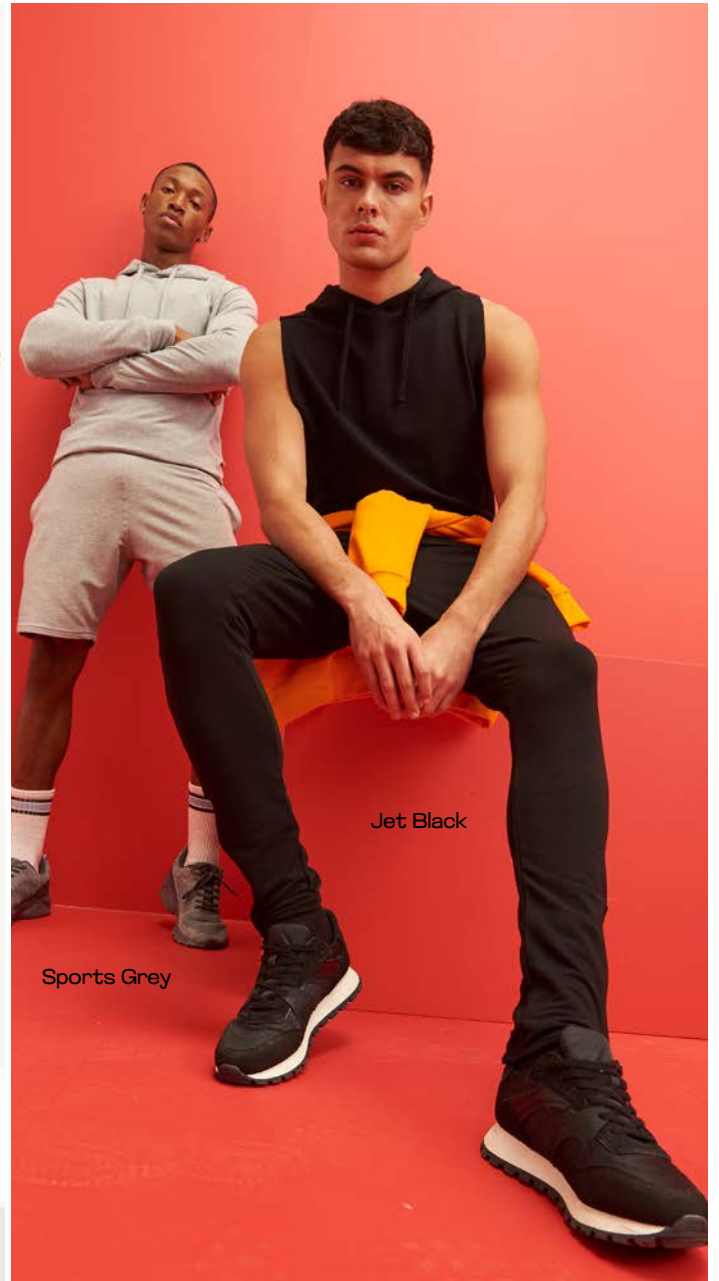
JC053
Jet Black

JC082
Jet Black

JC022
Arctic White
Page 101



Sports Grey



Jet Black

Sports Grey

JC072

MEN'S COOL JOG SHORT

60% Polyester / 35% Cotton / 5% Elastane
240gsm

1 90 182



Scan for
more info

JC082

MENS COOL TAPERED JOGPANT

60% Polyester / 35% Cotton / 5% Elastane
240gsm

1 90 182



Scan for
more info

LOVE IT... WEAR IT



AWDis has everything you need for your kids to get kitted out for school. We supply everything from uniforms to PE kits, to after school clubs. Our products are produced to last and endure all the fun that comes with being a kid.





JH030J
Mustard



JH001J
Desert
Sand

JH001J
Digital
Lavender



JH201J
Heather
Grey



JH001J
Forest
Green

CASUAL

JH043J
Burgundy /
Heather Grey

JH030J
Peppermint

JH050J
Sunset
Yellow

JH001J
Digital
Lavender

| | | |
|--------|-------------------------|-----|
| JH001J | Kids Hoodie | 138 |
| JH072J | Kids Cuffed Jogpants | 138 |
| JH201J | Kids Organic Hoodie | 139 |
| JT100J | The 100 Kids T | 140 |
| EA001J | Cascades Organic Kids T | 141 |
| JH030J | Kids AWDIs Sweat | 142 |
| JH050J | Kids Zoodie | 143 |
| JH003J | Kids Varsity Hoodie | 144 |
| JH043J | Kids Varsity Jacket | 145 |
| JH004J | Kids Electric Hoodie | 146 |
| JH014J | Kids Camo Hoodie | 147 |



JH001J

KIDS HOODIE

80% Ringspun Cotton /
20% Polyester*
280gsm



Scan for
more info

Desert
Sand

Digital
Lavender

New
French
Navy

Heather
Grey

JH072J

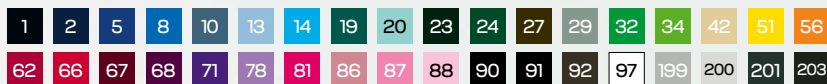
KIDS CUFFED JOGPANTS

80% Ringspun Cotton /
20% Polyester*
280gsm

1 90 199



Scan for
more info



JH201J

KIDS ORGANIC HOODIE

80% Organic Cotton /
20% Recycled Polyester*
280gsm

| | | | |
|----|----|----|-----|
| 1 | 5 | 66 | 67 |
| 88 | 91 | 97 | 199 |



Scan for
more info



Arctic
White



Royal
Blue



Baby
Pink

Royal
Blue

JH072J
Heather
Grey

JH072J
New
French
Navy



Arctic
White

* Heather and charcoal fabrications may vary.
Please scan QR code for details

JT100J

THE 100 KIDS T

100% Combed Ringspun Cotton*
140gsm

2 5 66 91 97 199



Scan for
more info

Oxford
Navy

EA001J

CASCADES ORGANIC KIDS T

100% Organic Cotton
150gsm

2 4 24 90 97 201



Scan for
more info

Ink Blue



Navy



Bottle
Green



JH030J

KIDS AWDIS SWEAT

80% Ringspun Cotton / 20% Polyester*
280gsm

| | | | | | | | | | | | | |
|----|----|----|----|----|----|----|----|----|----|----|-----|-----|
| 1 | 2 | 5 | 8 | 13 | 20 | 24 | 29 | 32 | 34 | 42 | 51 | 53 |
| 66 | 67 | 71 | 78 | 81 | 86 | 88 | 90 | 91 | 92 | 97 | 199 | 201 |



Scan for
more info



Dusty
Green



Mustard

Storm
Grey

JH050J

KIDS ZOODIE

80% Ringspun Cotton / 20% Polyester*
280gsm

| | | | | | | | | |
|----|----|----|----|----|----|----|----|-----|
| 1 | 2 | 5 | 8 | 14 | 32 | 42 | 51 | 66 |
| 67 | 71 | 78 | 81 | 88 | 90 | 91 | 97 | 199 |



Scan for
more info



Sun Yellow



Fire Red

* Heather fabrications may vary.
Please scan QR code for details

JH003J

KIDS VARSITY HOODIE

80% Ringspun Cotton / 20% Polyester*
280gsm



Scan for
more info



Jet Black /
Hot Pink



Jet Black /
Fire Red

JH043J

KIDS VARSITY JACKET

70% Ringspun Cotton / 30% Polyester*
330gsm



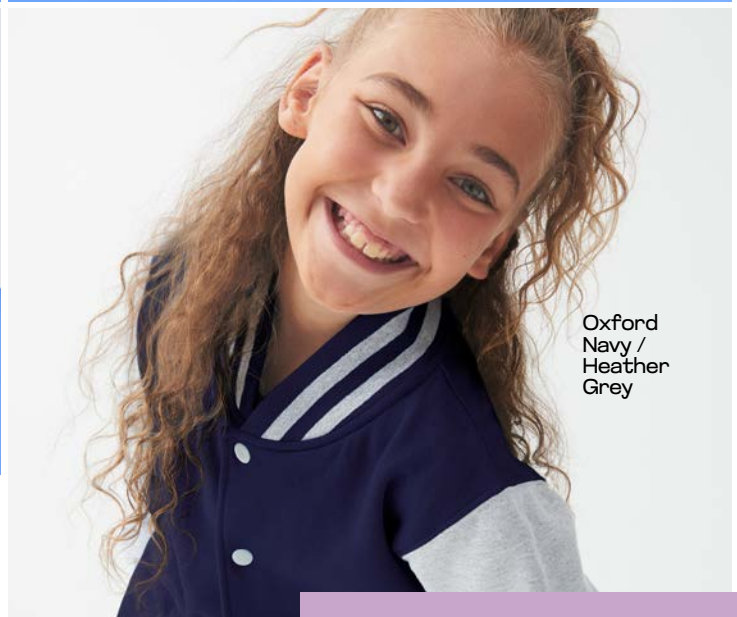
Scan for
more info



Burgundy /
Heather
Grey



Oxford
Navy /
Heather
Grey



JH001J
Digital
Lavender
Page 138

Purple /
Arctic White

JH030J
Peppermint
Page 142



Burgundy /
Heather
Grey

* Heather fabrications may vary. Please scan QR code for details

Electric
Pink

Electric
Orange



JH072J
Navy
Page 138

Electric
Yellow



JH004J

KIDS ELECTRIC HOODIE

85% Polyester / 15% Ringspun Cotton
280gsm

165 166 167 168



Scan for
more info



JH014J

KIDS CAMO HOODIE

70% Ringspun Cotton / 30% Polyester
280gsm



Scan for
more info

Black
Camo

THERE ARE NO RULES

Experience the luxurious touch with our super-soft print that we bet you can't feel. Specifically designed with camo patterns in carefully curated sizes and colour shades, these hoodies provide the ideal canvas to make your prints truly pop.

JC007J
Royal Blue

JC003J
Arctic White / Fire Red

JC040J
Sun Yellow

JC080
Fire Red



SPORTSWEAR

JC001J
Sapphire Blue

| | | |
|--------|------------------------------|-----|
| JC001J | Kids Cool T | 150 |
| JC201J | Kids Recycled Cool T | 151 |
| JC003J | Kids Contrast Cool T | 151 |
| JC020J | Kids Cool Smooth T | 152 |
| JH006J | Kids Sports Polyester Hoodie | 153 |
| JC040J | Kids Cool Polo | 154 |
| JC087J | Girls Cool Athletic Pant | 154 |
| JC007J | Kids Cool Vest | 155 |
| JC080J | Kids Cool Short | 155 |



JC007J
Royal Blue



JC040J
Sun Yellow

JC001J

KIDS COOL T

100% Polyester
140gsm



Scan for
more info

Purple



Sapphire
Blue



JC201J

KIDS RECYCLED COOL T

100% Recycled Polyester
140gsm



Scan for
more info



JC003J

KIDS CONTRAST COOL T

100% Polyester
140gsm



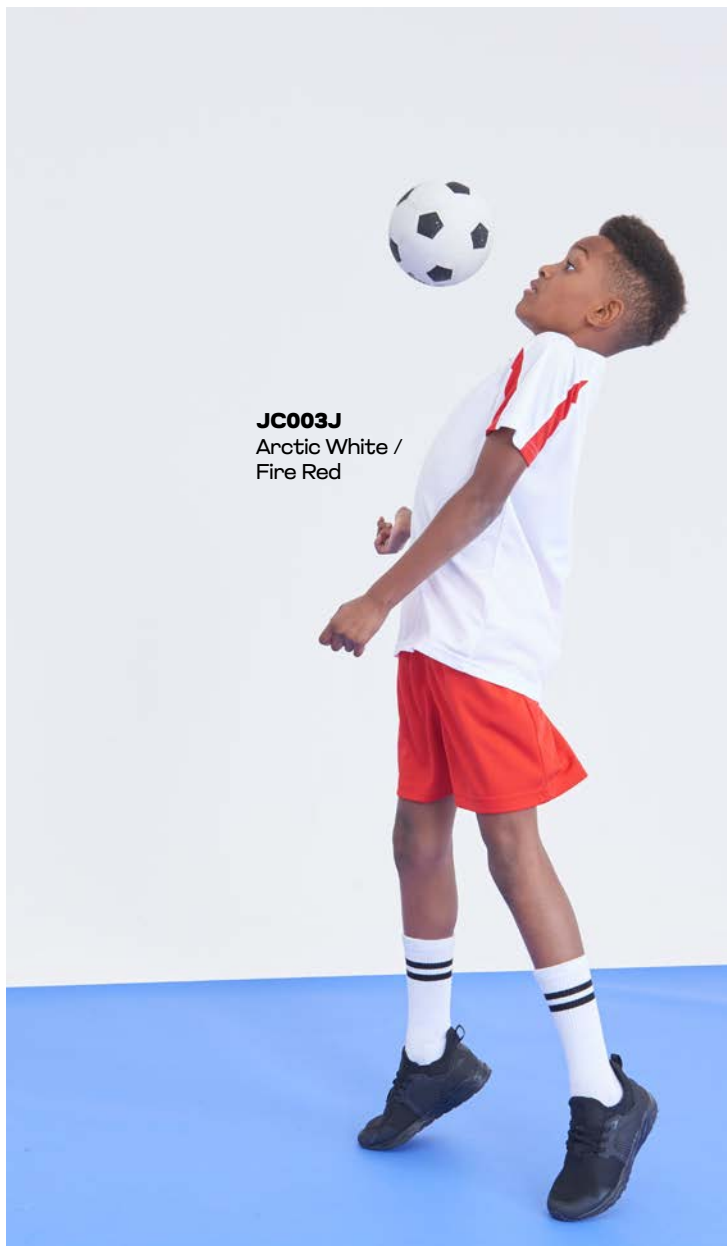
Scan for
more info



JC201J
Fire Red



JC201J
Purple



JC003J
Arctic White /
Fire Red



JC003J
Arctic White /
Fire Red

JC020J

KIDS COOL SMOOTH T

100% Polyester
135gsm



Scan for
more info



Fire Red

JH006J

KIDS SPORT POLYESTER HOODIE

100% Polyester

200gsm

2 5 90



Scan for
more info

Royal Blue

JC020J
Royal Blue
Page 152

JC040J

KIDS COOL POLO

100% Polyester
140gsm



Scan for
more info



Burgundy



Sun Yellow

JC087J

GIRL'S COOL ATHLETIC PANT

87% Polyester / 13% Elastane
280gsm



Scan for
more info

JC007J

KIDS COOL VEST

100% Polyester
140gsm

5 66 90 97



Scan for
more info



Royal Blue



Royal Blue

JC080J
Fire Red

JC080J

KIDS COOL SHORT

100% Polyester
140gsm

1 5 66 90 97



Scan for
more info



AC004
Sky

AC004J
White

SCHOOLWEAR

| | | |
|--------|----------------------------------|-----|
| AC001 | Senior Academy Raglan Sweatshirt | 158 |
| AC001J | Kids Academy Raglan Sweatshirt | 159 |
| AC002J | Kids Academy Cardigan | 160 |
| AC003 | Senior Academy V-Neck Sweatshirt | 161 |
| AC003J | Kids Academy V-Neck Sweatshirt | 161 |
| AC004 | Senior Academy Polo | 162 |
| AC004J | Kids Academy Polo | 163 |

AC004J
Red

AC003J
Purple

AC002J
Purple

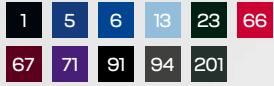
AC001
Purple



AC001

SENIOR ACADEMY RAGLAN SWEATSHIRT

80% Ringspun Cotton / 20% Polyester
280gsm



Scan for
more info

Red



Burgundy



AC001J

KIDS ACADEMY RAGLAN SWEATSHIRT

80% Ringspun Cotton / 20% Polyester
280gsm

Navy



Scan for
more info

Green



AC002J

KIDS ACADEMY CARDIGAN

80% Ringspun Cotton / 20% Polyester
280gsm

1 5 6 23

66 67 71



Scan for
more info



Deep Royal



Deep Royal



Deep Royal

Navy

AC003J

KIDS ACADEMY V-NECK SWEATSHIRT

80% Ringspun Cotton / 20% Polyester
280gsm



Scan for
more info

AC003

SENIOR ACADEMY V-NECK SWEATSHIRT

80% Ringspun Cotton / 20% Polyester
280gsm



Scan for
more info

AC004

SENIOR ACADEMY POLO

50% Cotton / 50% Polyester
220gsm

5 13 66 97



Scan for
more info



AC004J
White

AC004J
Red

Sky

Sky

AC004J

KIDS ACADEMY POLO

50% Cotton / 50% Polyester
220gsm

5 13 66 97



Scan for
more info



White



Red

COLOUR GUIDE

| | | | | | | | | |
|---|---|---|---|--|---|--|--|---|
| PMS 5395C (New) French Navy | PMS 533C Oxford Navy / Cobalt Blue | PMS 534C Denim Blue | PMS 19-4033 TCX Ink Blue | PMS 661C Royal Blue | PMS 19-3952 TCX PMS 7686C Bright Royal / Deep Royal | PMS 267C Reflex Blue | PMS 300C Sapphire Blue | PMS 285C Tropical Blue |
| PMS 5405C Airforce Blue | PMS 17-4021 TCX Dusty Blue | PMS 659C Cornflower Blue | PMS 644C Sky Blue | PMS 2995C Hawaiian Blue | PMS 311C Turquoise Surf | PMS 16-4612 TCX Seafoam | PMS 18-4735 TCX Lagoon Blue | PMS 3035C Deep Sea Blue |
| PMS 329C Jade | PMS 3242C Peppermint | PMS 12-4608 TCX Mint | PMS 7716C Turquoise Blue | PMS 627C Forest Green | PMS 554C Bottle Green | PMS 19-0509 TCX Combat Green | PMS 19-0414 TCX Mineral Green | PMS 448C Olive Green |
| PMS 561C Moss Green | PMS 16-5804 TCX Dusty Green | PMS 18-0420 TCX Earthy Green | PMS 19-0823 TCX Fern Green | PMS 347C Kelly Green | PMS 339C Spring Green | PMS 15-0146 TCX Lime Green | PMS 15-6310 TCX Pistachio Green | PMS 358C Apple Green |
| PMS 440C Hot Chocolate | PMS 19-1218 TCX Chocolate Fudge Brownie | PMS 18-1031 TCX Caramel Toffee | PMS 16-1323 TCX Caramel Latte | PMS 7531CP Mocha Brown | PMS 7502C Desert Sand | PMS 15-1114 TCX Sand Dune | PMS 15-0000 TCX Natural Stone | PMS 4665C Nude |
| PMS 14-1418 TCX Soft Peach | PMS 489C Peach Perfect | PMS 15-1433 TCX Peach Sorbet | PMS 7499C Vanilla Milkshake / Natural | PMS 120C Sherbet Lemon | PMS 109C Sun Yellow | PMS 13-0650 TCX Citrus | PMS 1245C Mustard | PMS 16-1450 TCX Mango Tango |
| PMS 136C Gold | PMS 1505C Orange Crush | PMS 16-1149 TCX Pumpkin Pie | PMS 18-1250 TCX Ginger Biscuit | PMS 173C Burnt Orange | PMS 179C Sunset Orange | PMS 17-1563 TCX Orange Flame | PMS 1945C Red Hot Chili | PMS 202C Brick Red |
| PMS 19-1334 TCX Red Rust | PMS 17-1663 TCX Soft Red | PMS 200C Fire Red | PMS 7421C Burgundy | PMS 511C Plum | PMS 18-3710 TCX Dusty Lilac | PMS 7666C Wild Mulberry | PMS 2617C Purple | PMS 2685C Ultra Violet |
| PMS 258C Magenta Magic | PMS 674C Pinky Purple | PMS 2563C Lavender | PMS 18-3820 TCX Twilight Purple | PMS 271C True Violet | PMS 17-3730 TCX Digital Lavender | PMS 19-2434 TCX Festival Fuchsia | PMS 215C Cranberry | PMS 214C Hot Pink |
| PMS 17-2435 TN Hyper Pink | PMS 191C Lipstick Pink | PMS 17-1610 TCX Dusty Purple | PMS 17-1718 TCX Dusty Rose | PMS 500CP Dusty Pink | PMS 204C Candyfloss Pink | PMS 1895C Baby Pink | PMS 11-1408 TCX Blush | PMS BLACK Jet Black |
| PMS 19-0414 TCX Deep Black / Solid Black | PMS BLACK 7C Storm Grey | PMS 19-0201 TCX Shark Grey | PMS 425C Steel Grey | PMS 18-0000 TCX Iron Grey | PMS COOL GRAY 5C Moondust Grey | PMS WHITE Arctic White / Solid White | PMS 5395C PMS 18-5210 TCX Navy / Charcoal | PMS 5395C PMS Navy / Navy Melange |
| PMS 5395C PMS 200C New French Navy / Fire Red | PMS 5395C PMS COOL GRAY 5C New French Navy / Heather Grey | PMS 5395C PMS 644C New French Navy / Sky Blue | PMS 533C PMS WHITE Oxford Navy / Arctic White | PMS 5395C PMS WHITE French Navy / Arctic White | PMS 533C PMS 204C Oxford Navy / Candyfloss Pink | PMS 533C PMS 2995C Oxford Navy / Hawaiian Blue | PMS 533C PMS COOL GRAY 5C Oxford Navy / Heather Grey | PMS 533C PMS Oxford Navy / Sun Yellow |

COLOUR GUIDE

| | | | | | | | | |
|-------------------------------------|---|---|---|---|--|--|---|---|
| PMS 661C PMS WHITE | PMS 661C PMS 109C | PMS 300C PMS COOL GRAY 5C | PMS 300C PMS 1505C | PMS 300C PMS 18-5210 TCX | PMS 644C PMS WHITE | PMS 2995C PMS 533C | PMS 2398C | PMS 627c PMS 138C |
| Royal Blue / Arctic White | Royal Blue / Sun Yellow | Sapphire Blue / Heather Grey | Sapphire Blue / Orange Crush | Sapphire Blue / Charcoal | Sky Blue / Arctic White | Hawaiian Blue / Oxford Navy | Ocean / Ocean Melange | Forest Green / Gold |
| PMS 347C PMS WHITE | PMS 809c PMS BLACK | PMS 1245C PMS WHITE | PMS 200C PMS BLACK | PMS 200C PMS WHITE | PMS 7421C PMS | PMS 7421C PMS 136C | PMS 7421C PMS COOL GRAY 5C | PMS 214C PMS WHITE |
| Kelly Green / Arctic White | Electric Yellow / Jet Black | Mustard / White | Fire Red / Jet Black | Fire Red / Arctic White | Burgundy / Charcoal | Burgundy / Gold | Burgundy / Heather Grey | Hot Pink / Arctic White |
| PMS 214C PMS 5395C | PMS 214C PMS 19-0414 TCX | PMS 1895C PMS WHITE | PMS 267C PMS WHITE | PMS 267C PMS 109C | PMS BLACK PMS 426CP | PMS BLACK PMS 18-5210 TCX | PMS BLACK PMS WHITE | PMS BLACK PMS 19-0414 TCX |
| Hot Pink / French Navy | Hot Pink / Black | Baby Pink / Arctic White | Purple / Arctic White | Purple / Sun Yellow | Black / Black Slate Melange | Black / Charcoal | Jet Black / Arctic White | Jet Black / Black |
| PMS BLACK PMS 806c | PMS BLACK PMS 200C | PMS BLACK PMS 136C | PMS BLACK PMS COOL GRAY 5C | PMS BLACK PMS 214C | PMS BLACK PMS 347C | PMS BLACK PMS 1505C | PMS BLACK PMS 267C | PMS BLACK PMS 300C |
| Jet Black / Electric Orange | Jet Black / Fire Red | Jet Black / Gold | Jet Black / Heather Grey | Jet Black / Hot Pink | Jet Black / Kelly Green | Jet Black / Orange Crush | Jet Black / Purple | Jet Black / Sapphire Blue |
| PMS BLACK PMS | PMS 18-5210 TCX PMS WHITE | PMS 18-5210 TCX PMS 7421C | PMS 18-5210 TCX PMS COOL GRAY 5C | PMS 18-5210 TCX PMS BLACK | PMS 18-5210 TCX PMS 15-0146 TCX | PMS 18-5210 TCX PMS 1505C | PMS 19-0414 TCX | PMS 425C PMS 19-0414 TCX |
| Jet Black / Sun Yellow | Charcoal / Arctic White | Charcoal / Burgundy | Charcoal / Heather Grey | Charcoal / Jet Black | Charcoal / Lime Green | Charcoal / Orange Crush | Solid Black / Black Camo | Steel Grey / Jet Black |
| PMS 18-0201 TCX | PMS COOL GRAY 5C PMS WHITE | PMS COOL GRAY 5C PMS 18-5210 TCX | PMS COOL GRAY 5C PMS 200C | PMS COOL GRAY 5C PMS 5395C | PMS COOL GRAY 5C PMS BLACK | PMS COOL GRAY 5C PMS 300C | PMS WHITE PMS 19-0414 TCX | PMS WHITE PMS 5395C |
| Grey / Grey Melange | Heather Grey / Arctic White | Heather Grey / Charcoal | Heather Grey / Fire Red | Heather Grey / French Navy | Heather Grey / Jet Black | Heather Grey / Sapphire Blue | Arctic White / Jet Black | Arctic White / French Navy |
| PMS WHITE PMS 300C | PMS WHITE PMS 200C | PMS 802C | PMS 806C | PMS 811C | PMS 809C | PMS | PMS | PMS |
| Arctic White / Sapphire Blue | Arctic White / Fire Red | Electric Green | Electric Orange | Electric Pink | Electric Yellow | Black Urban Marl | Grey Urban Marl | Navy Urban Marl |
| PMS 426CP | PMS 19-4122 TCX | PMS 16-1735 TPC | PMS 18-0201 TCX | PMS 2965C | PMS 2398C | PMS | PMS COOL GRAY 5C PMS 18-5210 TCX | PMS 5395C PMS COOL GRAY 5C |
| Black Slate Melange | Blue Melange | Electric Pink Melange | Grey Melange | Navy Melange | Ocean Melange | Raspberry Melange | Heather Grey / Charcoal | Navy / Heather Grey |
| PMS 15-4101 TPX / 421C | PMS 422C | | | | | | | |
| Silver Grey | Sports Grey | Black Camo | Green Camo | Grey Camo | Blue Cloud | Grey Pink Marble | Pastel Sunset Dip | Tie-Dye Swirl |
| PMS 2121C | PMS 2225C | PMS 495C | PMS 530C | PMS 7499C | PMS 433C | PMS 7421CP | PMS 445C | PMS 2379C |
| Surf Blue | Surf Ocean | Surf Pink | Surf Purple | Surf Yellow | Heather Black | Heather Burgundy | Heather Charcoal | Heather Navy |
| PMS COOL GRAY 5C | PMS COOL GRAY 2 UP | PMS 18-5210 TCX | PMS 18-0503 TCX | PMS 19-3902 TCX | PMS 7428C | PMS 533C | PMS 447CP | PMS BLACK |
| Heather Grey | Ash | Charcoal | Graphite Heather | Black Smoke | Burgundy Smoke | Navy Smoke | Washed Charcoal | Washed Jet Black |
| PMS 7469CP | PMS 7454CP | PMS 425CP | PMS 451CP | | | | | |
| Dark Blue Wash | Light Blue Wash | Slate | Stone | | | | | |

FABRIC GUIDE



JustHoods®

Street

70% Ringspun Cotton,
30% Polyester
330gsm
JH020, JH021, JH043/J, JH080,
JH147

Graduate

70% Ringspun Cotton,
30% Polyester
330gsm
JH101, JH103, JH150

Signature

70% Ringspun Cotton,
30% Polyester
420gsm
JH120

Sports Polyester

100% Polyester
200gsm
JH006/J, JH066

Organic

80% Organic Cotton,
20% Recycled Cotton
280gsm
JH201/J, JH230, JH250

Tie Dye

80% Ringspun Cotton,
20% Polyester
280gsm
JH022

Electric

85% Polyester,
15% Ringspun Cotton
280gsm
JH004/J

College

80% Ringspun Cotton,
20% Polyester
280gsm
JH001/F/J, JH003/3J, JH005, JH009,
JH011, JH022, JH030/F/J, JH033,
JH035, JH046, JH050/F/J, JH053,
JH063, JH072/J, JH074, JH305,
JC015, JC016, JC037



JustCool®

Neoteric

100% Polyester
140gsm
JC001/J, JC002, JC003/J,
JC005, JC007/J, JC009,
JC012, JC013, JC015,
JC040/J, JC043, JC045,
JC080

Dynamic Cool

92% Polyester,
8% Elastane
210gsm
JC037, JC038, JC057,
JC058

Recycled Leggings

80% Recycled Polyester,
20% Elastane
240gsm
JC217, JC287, JC288

Neoteric Smooth

100% Polyester
135gsm
JC020/J, JC021, JC022, JC023,
JC025, JC027

Cool-Flex

86% Polyester,
14% Elastane
280gsm
JC030, JC035, JC070

Cool Fit

87% Polyester,
13% Elastane
280gsm
JC031, JC036, JC086, JC087/J



Urban Cool

60% Polyester,
35% Cotton,
5% Elastane
240gsm
JC052, JC054, JC072, JC074,
JC082

Urban Cool Fitness

60% Polyester,
40% Elastane
140gsm
JC110, JC116

Neoteric Recycled

100% Recycled Polyester
140gsm
JC201, JC205, JC201J

Baselayer

91% Recycled Polyester,
9% Elastane
160gsm
JC232

Sliders

95% Polyester,
5% Elastane
NA
JC093

Urban Cool Marl

100% Polyester
155gsm
JC004



JustTs®

Tri-Blend

50% Polyester, 25% Viscose, 25% Cotton
160gsm
JT001, JT001F, JT002, JT002F, JT004, JT006, JT007, JT016, JT017

Cotton 100

100% Ringspun Combed Cotton
140gsm
JT100, JT100F, JT100J, JT022

JT009

100% Ringspun Combed Cotton
190gsm
JT009, JT019



JustPolos®

Cotton 100 Pique

100% Ringspun Cotton
180gsm
JP100, JP100F, JP103

Stretch

97% Cotton, 3% Elastane
200gsm
JP002, JP003



Organic Pique

100% Organic Cotton
170gsm
EA011

Regenerated Terry

70% Recycled Cotton 30% Recycled Polyester
260gsm
EA030, EA040

Organic EA Fleece

100% Organic Cotton
270gsm
EA041

Recycled Sweat

70% Recycled Cotton, 30% Recycled Polyester
280gsm
EA032, EA042, EA070

Recycled T

48% Recycled Cotton, 47% Recycled Polyester, 5% Elastane
220gsm
EA006

Viscose

70% Lenxing Ecovero, 30% Organic Cotton
160gsm
EA002, EA002F

Organic

100% Organic Cotton
150gsm
EA001, EA001F, EA001J, EA021



Mens Black Jeans

73% Cotton, 25% Polyester, 2% Elastane
11oz
SD001, SD004, SD060, SD065

Womens Blue Jeans

98% Cotton, 2% Elastane
9oz
SD011, SD014

Womens Black Jeans

77% Cotton, 21% Polyester, 2% Elastane
9oz
SD011, SD014

Mens Blue Jeans

99% Cotton, 1% Elastane
10.5oz
SD001, SD004, SD060, SD065

Chino

98% Cotton, 2% Elastane
290gsm
SD020, SD025

Denim Shirt

100% Cotton
5.44oz
SD040, SD045

YOUR PRINT GUIDE

Printability is in the fibres of everything we do. Our products are thoughtfully designed with printing in mind, ensuring a seamless experience for every decorator. Whether it's our college fabric with a smooth 100% ringspun cotton face, the JC001's tried and tested neoteric fabric or t-shirts with premium smooth cotton, we prioritise providing the perfect canvas for your chosen decoration technique. Discover valuable insights and top tips in our online Print Guides.



Scan for
more info



BRAND GUIDE

JustHoods®

| | | | | | |
|--------|-------------------------------|-----|--------|--------------------------------|-----|
| JH001 | College Hoodie | 10 | JH046 | Sophomore 1/4 Zip Sweat | 71 |
| JH001F | Women's College Hoodie | 18 | JH050 | Zoodie | 27 |
| JH001J | Kids Hoodie | 138 | JH050F | Women's College Zoodie | 28 |
| JH003 | Varsity Hoodie | 31 | JH050J | Kids Zoodie | 143 |
| JH003J | Kids Varsity Hoodie | 144 | JH052 | Chunky Zoodie | 51 |
| JH004 | Electric Hoodie | 63 | JH053 | Varsity Zoodie | 33 |
| JH004J | Kids Electric Hoodie | 146 | JH063 | Baseball Zoodie | 33 |
| JH006 | Sports Polyester Hoodie | 96 | JH065 | Women's Fashion Cropped Zoodie | 59 |
| JH006J | Kids Sports Polyester Hoodie | 153 | JH066 | Sports Polyester Zoodie | 97 |
| JH009 | Baseball Hoodie | 32 | JH072 | College Cuffed Jogpants | 13 |
| JH011 | Epic Print Hoodie | 55 | JH072J | Kids Cuffed Jogpants | 138 |
| JH014 | Camo Hoodie | 62 | JH074 | Tapered Track Pant | 32 |
| JH014J | Kids Camo Hoodie | 147 | JH080 | Campus Shorts | 48 |
| JH015 | Hoodie Dress | 58 | JH100 | Chunky Hoodie | 51 |
| JH016 | Women's Cropped Hoodie | 58 | JH101 | Graduate Heavyweight Hoodie | 48 |
| JH017 | Surf Hoodie | 64 | JH120 | Heavyweight Signature Hoodie | 38 |
| JH020 | Street Hoodie | 55 | JH130 | Graduate Heavyweight Sweat | 49 |
| JH021 | Cross Neck Hoodie | 54 | JH147 | Campus Full Zip Sweat | 70 |
| JH022 | Tie-Dye Hoodie | 57 | JH150 | Graduate Heavyweight Zoodie | 49 |
| JH030 | AWDis Sweat | 23 | JH201 | Organic Hoodie | 14 |
| JH030F | Women's AWDis Sweat | 24 | JH201J | Kids Organic Hoodie | 139 |
| JH030J | Kids AWDis Sweat | 142 | JH230 | Organic Sweat | 25 |
| JH037 | Women's Cropped 1/4 Zip Sweat | 59 | JH250 | Organic Zoodie | 29 |
| JH043 | Varsity Jacket | 34 | JH305 | Women's Relaxed Hoodie | 41 |
| JH043J | Kids Varsity Jacket | 145 | | | |

JustTs®

| | | | | | |
|--------|---------------------------------|----|--------|----------------------------|-----|
| JT001 | Tri-Blend T | 72 | JT017 | Women's Tank Top | 61 |
| JT001F | Women's Tri-Blend T | 72 | JT019 | Oversize 100 Long Sleeve T | 44 |
| JT002 | Long Sleeve Tri-Blend T | 73 | JT022 | Tie-Dye T | 57 |
| JT002F | Long Sleeve Women's Tri-Blend T | 73 | JT032 | Surf T | 64 |
| JT004 | Electric Tri-Blend T | 63 | JT034 | Camo T | 62 |
| JT006 | Women's Tri-Blend Cropped T | 60 | JT099 | Washed T | 65 |
| JT007 | Tri-Blend Vest | 61 | JT100 | The 100 T | 16 |
| JT009 | Oversize 100 T | 42 | JT100F | The 100 Women's T | 19 |
| JT016 | Women's Long Sleeve Cropped T | 60 | JT100J | The 100 Kids T | 140 |

JustPolos®

| | | | | | |
|-------|---------------------|----|--------|-----------------------------|----|
| JP001 | Tri-Blend Polo | 78 | JP100 | The 100 Polo | 74 |
| JP002 | Stretch Polo | 79 | JP100F | The 100 Women's Polo | 75 |
| JP003 | Stretch Tipped Polo | 76 | JP103 | Long Sleeve Tipped 100 Polo | 77 |



| | | | | | |
|--------|----------------------------------|-----|--------|--------------------------------|-----|
| AC001 | Senior Academy Raglan Sweatshirt | 158 | AC003J | Kids Academy V-Neck Sweatshirt | 161 |
| AC001J | Kids Academy Raglan Sweatshirt | 159 | AC004 | Senior Academy Polo | 162 |
| AC002J | Kids Academy Cardigan | 160 | AC004J | Kids Academy Polo | 163 |
| AC003 | Senior Academy V-Neck Sweatshirt | 161 | | | |

JustCool®

| | | | | | |
|--------|----------------------------------|-----|--------|----------------------------------|-----|
| JC001 | Cool T | 89 | JC040J | Kids Cool Polo | 154 |
| JC001J | Kids Cool T 1 | 50 | JC041 | Supercool Performance Polo | 112 |
| JC002 | Long Sleeve Cool T | 99 | JC043 | Contrast Cool Polo | 105 |
| JC003 | Contrast Cool T | 104 | JC045 | Women's Cool Polo | 109 |
| JC003J | Kids Contrast Cool T | 151 | JC052 | Cool Fitness Hoodie | 132 |
| JC004 | Cool Urban T | 114 | JC053 | Urban Sleeveless Muscle Hoodie | 132 |
| JC005 | Women's Cool T | 90 | JC057 | Men's Cool Contrast Zoodie | 131 |
| JC007 | Cool Vest | 101 | JC058 | Women's Cool Contrast Zoodie | 131 |
| JC007J | Kids Cool Vest | 155 | JC070 | Women's Cool Workout Legging | 90 |
| JC009 | Cool Muscle Vest | 101 | JC072 | Men's Cool Jog Short | 133 |
| JC011 | Supercool Performance T | 112 | JC074 | Women's Cool Jog Short | 125 |
| JC012 | Women's Long Sleeve Cool T | 99 | JC080 | Cool Shorts | 89 |
| JC013 | Women's Open Back T | 121 | JC080J | Kids Cool Short | 155 |
| JC015 | Women's Cool Vest | 103 | JC082 | Mens Cool Tapered Jogpant | 133 |
| JC017 | Women's Cool Sports Crop Top | 95 | JC086 | Women's Cool Capri | 91 |
| JC020 | Cool Smooth T | 94 | JC087 | Women's Cool Athletic Pant | 91 |
| JC020J | Kids Cool Smooth T | 152 | JC087J | Girl's Cool Athletic Pant | 154 |
| JC021 | Cool Smooth Polo | 109 | JC088 | Women's Cool Training Shorts | 125 |
| JC022 | Cool Smooth Sports Vest | 101 | JC092 | Cool Sliders | 129 |
| JC023 | Long Sleeve Active T | 116 | JC110 | Cool Urban Fitness T | 115 |
| JC025 | Women's Cool Smooth T | 94 | JC201 | Recycled Cool T | 92 |
| JC027 | Women's Cool Smooth Workout Vest | 95 | JC201J | Kids Recycled Cool T | 151 |
| JC030 | Cool Flex 1/4 Zip Top | 127 | JC205 | Women's Recycled Cool T | 92 |
| JC031 | Men's Cool 1/2 Zip Sweat | 106 | JC217 | Women's Recycled Tech Sports Bra | 123 |
| JC035 | Women's Cool Flex 1/4 Zip Top | 127 | JC232 | Active Recycled Baselayer | 117 |
| JC036 | Women's Cool 1/2 Zip Sweat | 107 | JC281 | Active Trackpants | 119 |
| JC037 | Men's Cool Cowl Neck Top | 130 | JC287 | Women's Recycled Tech Leggings | 123 |
| JC038 | Women's Cool Cowl Neck Top | 130 | JC288 | Women's Recycled Tech Shorts | 124 |
| JC040 | Cool Polo | 109 | | | |

So DENIM

| | | | | | |
|-------|---------------------|----|-------|---------------------|----|
| SD001 | Leo Straight Jeans | 82 | SD025 | Lily Skinny Chinos | 80 |
| SD004 | Max Slim Jeans | 82 | SD040 | Jack Denim Shirt | 85 |
| SD011 | Katy Straight Jeans | 83 | SD045 | Lucy Denim Shirt | 85 |
| SD014 | Lara Skinny Jeans | 83 | SD060 | Noah Denim Jacket | 84 |
| SD020 | Adam Slim Chinos | 80 | SD065 | Olivia Denim Jacket | 84 |

écologie.

| | | | | | |
|--------|----------------------------------|-----|-------|------------------------------------|----|
| EA001 | Cascades Organic T | 17 | EA032 | Crater Recycled Sweatshirt | 47 |
| EA001F | Cascades Organic Women's T | 19 | EA040 | Lusaka Sustainable Hoodie | 66 |
| EA001J | Cascades Organic Kids T | 141 | EA041 | Corcovado Organic Hoodie | 67 |
| EA002 | Daintree EcoViscose T | 65 | EA042 | Crater Recycled Hoodie | 47 |
| EA002F | Daintree EcoViscose Women's T | 65 | EA051 | Okavango Sustainable Zoodie | 67 |
| EA004 | Ambaro Recycled Sports T | 113 | EA060 | Arenal Sustainable Sweater | 81 |
| EA004F | Ambaro Recycled Women's Sports T | 113 | EA061 | Wakhan 1/4 Zip Sustainable Sweater | 81 |
| EA006 | Arrow Recycled Heavy Oversize T | 43 | EA062 | Taroko Sustainable Sweater | 81 |
| EA011 | Etosha Organic Polo Shirt | 75 | EA070 | Crater Recycled Jogpants | 47 |
| EA021 | Erawan Organic Long Sleeve T | 73 | EA080 | Iguazu Sustainable Knitted Hoodie | 81 |
| EA030 | Banff Sustainable Sweatshirt | 66 | | | |

FIT GUIDE

THIS GUIDE REFERS TO BODY MEASUREMENTS. FOR SPECIFIC STYLE MEASUREMENTS PLEASE USE INDIVIDUAL BRAND STYLE SPECS

To Fit measurements are a guide only. To Fit measurements are body measurements. Brand measurements are garment measurements.

Each brand has specialised measurements per style therefore fit will vary depending on brand and styling. A size M will be able to wear a size M across all brands however fit will vary depending on the style of the garment. Please see Brands spec sheets for specific garment measurements.

MEN'S / UNISEX CLOTHING

| | XXS | XS | S | M | L | XL | XXL | 3XL | 4XL | 5XL | 6XL | 7XL |
|---------------------|-------|---------|---------|---------|---------|---------|----------|-----------|-----------|-----------|---------|---------|
| TO FIT CHEST CM | 81 | 86 | 91 | 101 | 111 | 121 | 132 | 142 | 152 | 157 | 162 | 167 |
| 167 | 32 | 34 | 36 | 40 | 44 | 48 | 52 | 56 | 60 | 62 | 64 | 66 |
| TO FIT WAIST CM | 26-28 | 28 - 30 | 30 - 32 | 32 - 34 | 34 - 36 | 36 - 38 | 38 - 40 | 40 - 42 | 42 - 44 | 44 - 46 | 46-48 | 48-50 |
| TO FIT WAIST INCHES | 66-71 | 71 - 76 | 76 - 81 | 81 - 86 | 86 - 91 | 91 - 96 | 96 - 101 | 101 - 106 | 106 - 111 | 111 - 116 | 116-121 | 121-127 |

| INTERNATIONAL SIZES | XXS | XS | S | M | L | XL | XXL | 3XL | 4XL | 5XL | 6XL | 7XL |
|---------------------|-----|----|----|----|----|----|-----|-----|-----|-----|-----|-----|
| FRENCH | 38 | 40 | 42 | 44 | 46 | 48 | 50 | 52 | 54 | 56 | 58 | 60 |
| ITALIAN | 42 | 44 | 46 | 48 | 50 | 52 | 54 | 56 | 58 | 60 | 62 | 64 |
| GERMAN | 30 | 32 | 33 | 34 | 36 | 38 | 40 | 42 | 44 | 46 | 48 | 50 |
| NETHERLANDS | 30 | 32 | 33 | 34 | 36 | 38 | 40 | 42 | 44 | 46 | 48 | 50 |
| SPAIN | 38 | 40 | 42 | 44 | 46 | 48 | 50 | 52 | 54 | 56 | 58 | 60 |
| USA | 32 | 34 | 36 | 38 | 40 | 42 | 44 | 46 | 48 | 50 | 52 | 54 |

WOMEN'S CLOTHING

| | 6 | 8 | 10 | 12 | 14 | 16 | 18 | 20 | 22 |
|---------------------|---------|---------|---------|---------|---------|---------|---------|----------|-----------|
| | XXS | XS | S | M | L | XL | 2XL | 3XL | 4XL |
| TO FIT WAIST INCHES | 22 - 24 | 24 - 26 | 26 - 28 | 28 - 30 | 30 - 32 | 32 - 34 | 34 - 36 | 36 - 42 | 42 - 44 |
| TO FIT WAIST CM | 56 - 61 | 61 - 66 | 66 - 71 | 71 - 76 | 76 - 81 | 81 - 86 | 86 - 91 | 91 - 106 | 106 - 111 |

| INTERNATIONAL SIZES | 6 | 8 | 10 | 12 | 14 | 16 | 18 | 20 | 22 |
|---------------------|----|----|----|----|----|----|----|----|----|
| FRENCH | 34 | 36 | 38 | 40 | 42 | 44 | 46 | 48 | 50 |
| ITALIAN | 38 | 40 | 42 | 44 | 46 | 48 | 50 | 52 | 54 |
| GERMAN | 32 | 34 | 36 | 38 | 40 | 42 | 44 | 46 | 48 |
| NETHERLANDS | 32 | 34 | 36 | 38 | 40 | 42 | 44 | 46 | 48 |
| SPAIN | 34 | 36 | 38 | 40 | 42 | 44 | 46 | 48 | 50 |
| USA | 2 | 4 | 6 | 8 | 10 | 12 | 14 | 16 | 18 |

CHILDREN'S CLOTHING

| | XXS | XS | S | M | L | XL | 2XL |
|-------------|-------|-------|-------|-------|--------|---------|-----|
| CHEST | 24" | 26" | 28" | 30" | 32" | 34" | 36" |
| AGE | 1 - 2 | 3 - 4 | 5 - 6 | 7 - 8 | 9 - 11 | 12 - 13 | 13 |
| HEIGHT (CM) | 90 | 102 | 114 | 126 | 138 | 150 | 156 |

| INTERNATIONAL SIZES | XXS | XS | S | M | L | XL | 2XL |
|---------------------|---------|----------|-----------|-----------|-----------|-----------|---------|
| CHEST | 24" | 26" | 28" | 30" | 32" | 34" | 36" |
| AGE | 1 - 2 | 3 - 4 | 5 - 6 | 7 - 8 | 9 - 11 | 12 / 13 | 14/15 |
| HEIGHT (CM) | 80 - 92 | 98 - 104 | 110 - 116 | 122 - 128 | 134 - 146 | 152 - 158 | 164-170 |

INTERNATIONAL SIZE GUIDES

| MEN | SIZE | UK | FR | DE | NL | ES | IT | USA |
|-----|------|-----|----|----|----|----|----|-----|
| | XS | XS | 40 | 32 | 32 | 40 | 44 | 34 |
| | S | S | 42 | 33 | 33 | 42 | 46 | 36 |
| | M | M | 44 | 34 | 34 | 44 | 48 | 38 |
| | L | L | 46 | 36 | 36 | 46 | 50 | 40 |
| | XL | XL | 48 | 38 | 38 | 48 | 52 | 42 |
| | 2XL | 2XL | 50 | 40 | 40 | 50 | 54 | 44 |
| | 3XL | 3XL | 52 | 42 | 42 | 52 | 56 | 46 |
| | 4XL | 4XL | 54 | 44 | 44 | 54 | 58 | 48 |
| 5XL | 5XL | 56 | 46 | 46 | 56 | 60 | 50 | |

| WOMEN | SIZE | UK | FR | DE | NL | ES | IT | USA |
|-------|------|----|----|----|----|----|----|-----|
| | XXS | 6 | 34 | 32 | 32 | 34 | 38 | 2 |
| | XS | 8 | 36 | 34 | 34 | 36 | 40 | 4 |
| | S | 10 | 38 | 36 | 36 | 38 | 42 | 6 |
| | M | 12 | 40 | 38 | 38 | 40 | 44 | 8 |
| | L | 14 | 42 | 40 | 40 | 42 | 46 | 10 |
| | XL | 16 | 44 | 42 | 42 | 44 | 46 | 12 |
| | 2XL | 18 | 46 | 44 | 44 | 46 | 50 | 14 |
| | 3XL | 20 | 48 | 46 | 46 | 48 | 52 | 16 |
| 4XL | 22 | 50 | 48 | 48 | 50 | 54 | 18 | |

| KIDS | SIZE | AGE | HEIGHT |
|------|-------------|------------|-----------|
| | XS | 3/4 years | 98-104cm |
| | S | 5/6 years | 110-116cm |
| | M | 7/8 years | 122-128cm |
| | L | 9/11 years | 134-146cm |
| XL | 12/13 years | 152-158cm | |



WE
ARE
AWDis

OUR COLOURS

| | | | | | | | | |
|------------------------------|-----------------------------|------------------------------|------------------------------|----------------------------|-----------------------------|------------------------------|--------------------------|----------------------------|
| 109 | 110 | 111 | 112 | 113 | 114 | 115 | 116 | 117 |
| Royal Blue / Arctic White | Royal Blue / Sun Yellow | Sapphire Blue / Heather Grey | Sapphire Blue / Orange Crush | Sapphire Blue / Charcoal | Sky Blue / Arctic White | Hawaiian Blue / Oxford Navy | Ocean / Ocean Melange | Forest Green / Gold |
| 118 | 119 | 120 | 121 | 122 | 123 | 124 | 125 | 126 |
| Kelly Green / Arctic White | Electric Yellow / Jet Black | Mustard / White | Fire Red / Jet Black | Fire Red / Arctic White | Burgundy / Charcoal | Burgundy / Gold | Burgundy / Heather Grey | Hot Pink / Arctic White |
| 127 | 128 | 129 | 130 | 131 | 132 | 133 | 134 | 135 |
| Hot Pink / French Navy | Hot Pink / Black | Baby Pink / Arctic White | Purple / Arctic White | Purple / Sun Yellow | Black / Black Slate Melange | Black / Charcoal | Jet Black / Arctic White | Jet Black / Black |
| 136 | 137 | 138 | 139 | 140 | 141 | 142 | 143 | 144 |
| Jet Black / Electric Orange | Jet Black / Fire Red | Jet Black / Gold | Jet Black / Heather Grey | Jet Black / Hot Pink | Jet Black / Kelly Green | Jet Black / Orange Crush | Jet Black / Purple | Jet Black / Sapphire Blue |
| 145 | 146 | 147 | 148 | 149 | 150 | 151 | 152 | 153 |
| Jet Black / Sun Yellow | Charcoal / Arctic White | Charcoal / Burgundy | Charcoal / Heather Grey | Charcoal / Jet Black | Charcoal / Lime Green | Charcoal / Orange Crush | Solid Black / Black Camo | Steel Grey / Jet Black |
| 154 | 155 | 156 | 157 | 158 | 159 | 160 | 161 | 162 |
| Grey / Grey Melange | Heather Grey / Arctic White | Heather Grey / Charcoal | Heather Grey / Fire Red | Heather Grey / French Navy | Heather Grey / Jet Black | Heather Grey / Sapphire Blue | Arctic White / Jet Black | Arctic White / French Navy |
| 163 | 164 | 165 | 166 | 167 | 168 | 169 | 170 | 171 |
| Arctic White / Sapphire Blue | Arctic White / Fire Red | Electric Green | Electric Orange | Electric Pink | Electric Yellow | Black Urban Marl | Grey Urban Marl | Navy Urban Marl |
| 172 | 173 | 174 | 175 | 176 | 177 | 178 | 179 | 180 |
| Black Slate Melange | Blue Melange | Electric Pink Melange | Grey Melange | Navy Melange | Ocean Melange | Raspberry Melange | Heather Grey / Charcoal | Navy / Heather Grey |
| 181 | 182 | 183 | 184 | 185 | 186 | 187 | 188 | 189 |
| Silver Grey | Sports Grey | Black Camo | Green Camo | Grey Camo | Blue Cloud | Grey Pink Marble | Pastel Sunset Dip | Tie-Dye Swirl |
| 190 | 191 | 192 | 193 | 194 | 195 | 196 | 197 | 198 |
| Surf Blue | Surf Ocean | Surf Pink | Surf Purple | Surf Yellow | Heather Black | Heather Burgundy | Heather Charcoal | Heather Navy |
| 199 | 200 | 201 | 202 | 203 | 204 | 205 | 206 | 207 |
| Heather Grey | Ash | Charcoal | Graphite Heather | Black Smoke | Burgundy Smoke | Navy Smoke | Washed Charcoal | Washed Jet Black |
| 208 | 209 | 210 | 211 | | | | | |
| Dark Blue Wash | Light Blue Wash | Slate | Stone | | | | | |

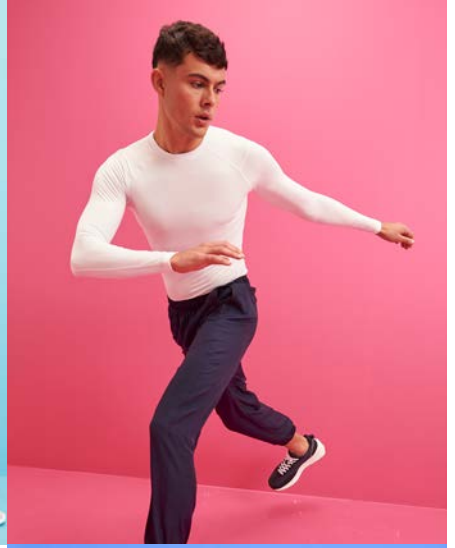
Just Ts[®]
AWDis



Just Hoods[®]
AWDis



Just Cool[®]
AWDis



**WE
ARE
AWDis**

www.awdisbrands.com



**So
DENIM**
by AWDis

écologie.

Just Polos[®]
AWDis